



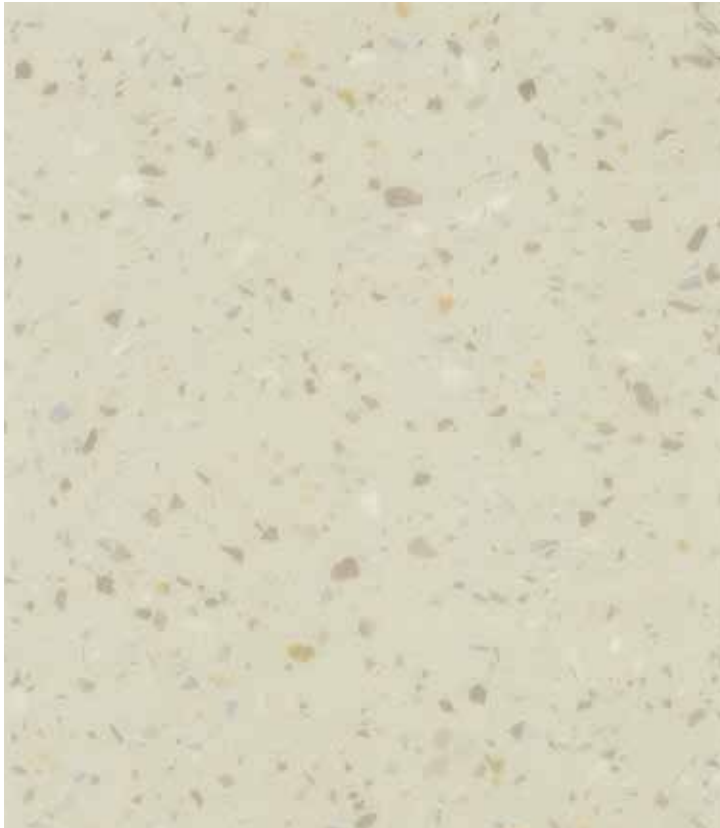
**Armstrong**Flooring™

**Varit® Elite**



K6960-03A

Glimmer



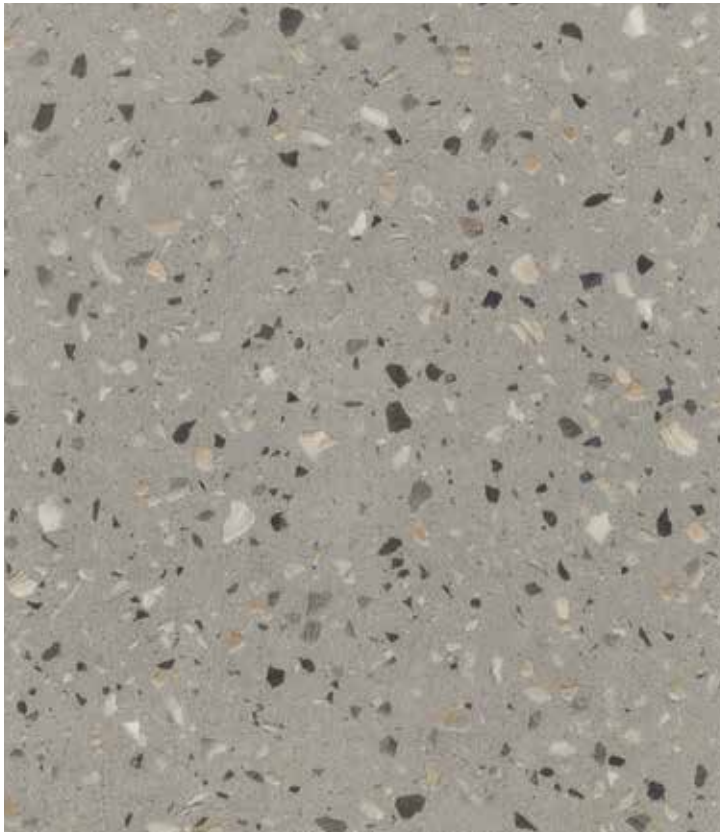
K6960-04A

Puse



K6960-05A

Azurite



K6960-06A

Phantom



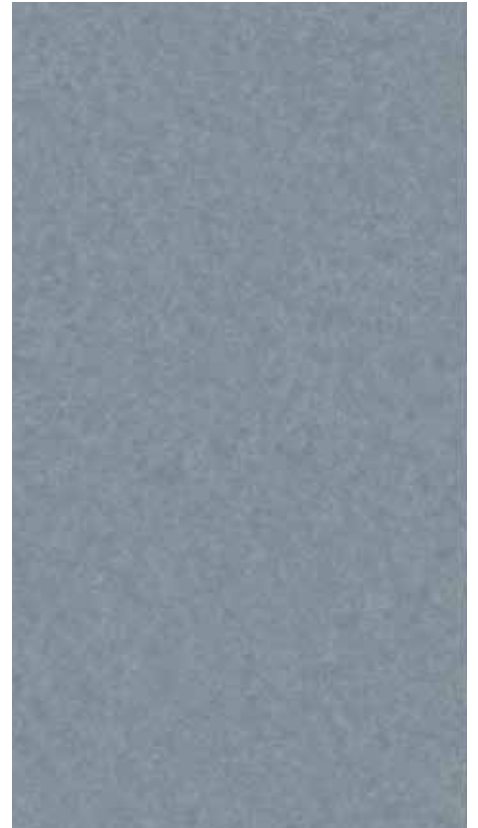
K6993-01A

Creamy



K6993-05A

Snowing



K6993-09A

Sklit



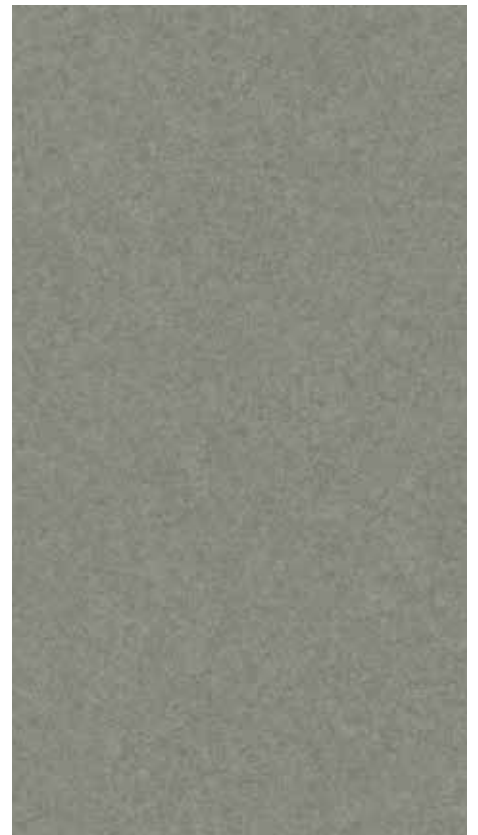
K6993-21A

Misty



K6993-22A





Gravel



K6993-20A

Sandro

Technical Data

Characteristics	Standard	Unit	Result
Type of flooring	EN ISO 10582		Heterogeneous Vinyl Sheet
Surface treatment			TRUESHIELD for HET
Pattern			Concrete / Terrazzo
<b>Safety criteria</b>			
Flammability	EN 13501	class	B <sub>fl</sub> -S1
Slip resistance	DIN 51130	class	R10
Dynamic coefficient of friction	EN 13893	class	DS
<b>Performance behaviour</b>			
Roll dimensions	EN ISO 24341	m	2.0m×15/20m
Overall thickness	EN ISO 24346	mm	2.0
Thickness of wear layer	EN ISO 24340	mm	0.7
Residual indentation	EN ISO 24343-1	mm	< 0.1
Dimensional stability	EN ISO 23999	%	< 0.4
Wear resistance	EN 649	class	T
Color fastness	EN ISO 105-B01	rating	≥ 6
Castor wheel test	EN ISO 4918		Applicable
Chemical resistance	EN 423		No stain 0
<b>Classification</b>			
Commercial very heavy	EN ISO 10582		Class 34
<b>Additional property</b>			
Castor chair  ✓		Underfloor heating  ✓	
Antistatic behaviour  ✓		Chemical resistance  ✓	

**Armstrong**Flooring™

Walk On. Walk Strong.™

[www.armstrongflooring.asia](http://www.armstrongflooring.asia)

**Varit® Elite**

YS-SF- Varit Elite -0725-HK Printed in China