

Model Number	Total Movement		Joint Opening "A"						Seal Depth "B"	
			Minimum		Nominal		Maximum			
SIF-050	0.50	13	0.250	6	0.50	13	0.750	19	1.50	38
SIF-063	0.63	16	0.312	8	0.63	16	0.938	24	1.50	38
SIF-075	0.75	19	0.375	10	0.75	19	1.125	29	1.50	38
SIF-100	1.00	25	0.500	13	1.00	25	1.500	38	2.00	51
SIF-125	1.25	32	0.625	16	1.25	32	1.875	48	2.00	51
SIF-150	1.50	38	0.750	19	1.50	38	2.250	57	2.00	51
SIF-175	1.75	44	0.875	22	1.75	44	2.625	67	2.00	51
SIF-200	2.00	51	1.000	25	2.00	51	3.000	76	2.00	51
SIF-225	2.25	57	1.125	29	2.25	57	3.375	86	2.00	51
SIF-250	2.50	64	1.250	32	2.50	64	3.750	95	2.00	51
SIF-275	2.75	70	1.375	35	2.75	70	4.150	105	3.00	76
SIF-300	3.00	76	1.500	38	3.00	76	4.500	114	3.00	76
SIF-325	3.25	83	1.562	40	3.25	83	4.812	122	3.00	76
SIF-350	3.50	89	1.750	44	3.50	89	5.250	133	3.00	76
SIF-375	3.75	95	1.875	48	3.75	95	5.625	143	3.00	76
SIF-400	4.00	102	2.000	51	4.00	102	6.000	152	3.00	76

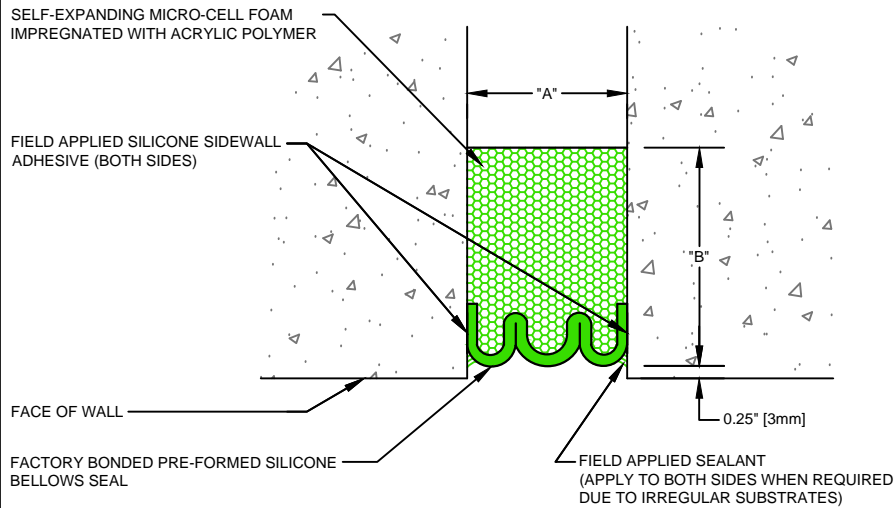
Dimension shown in **inches** (bold) and millimeters. Contact MM Systems for larger system sizes.

Model Number	Total Movement		Joint Opening "A"						Seal Depth "B"	
			Minimum		Nominal		Maximum			
SIF-500	5.00	127	2.500	64	5.00	127	7.500	191	3.00	76
SIF-600	6.00	152	3.000	76	6.00	152	9.000	229	4.00	102
SIF-700	7.00	178	3.500	89	7.00	178	10.500	267	4.00	102
SIF-800	8.00	203	4.000	102	8.00	203	12.000	305	4.00	102
SIF-900	9.00	229	4.500	114	9.00	229	13.500	343	4.00	102
SIF-1000	10.00	254	5.000	127	10.00	254	15.000	381	4.00	102

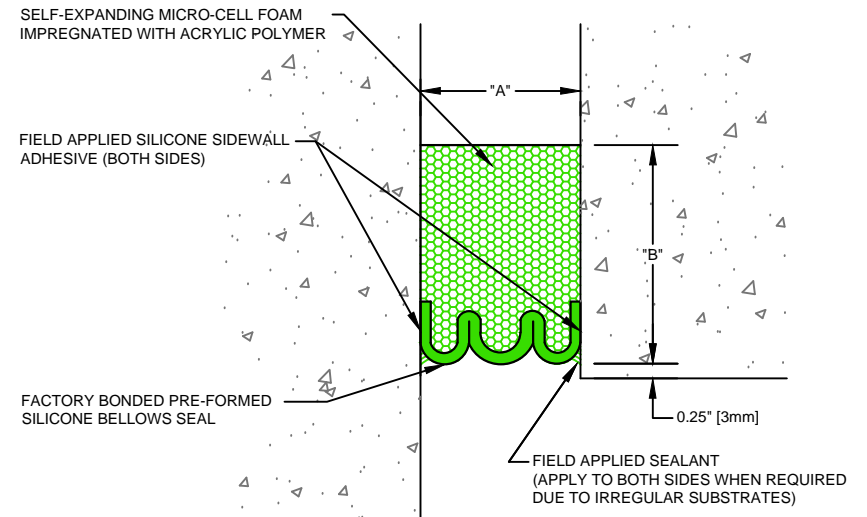
Dimension shown in **inches** (bold) and millimeters. Contact MM Systems for larger system sizes.

NOTES:

- 1) THE SELF-EXPANDING SIF SERIES IS PRE-COMPRESSED IN THE FACTORY TO 0.25" LESS THAN THE NOMINAL JOINT OPENING "A" DIMENSION.
- 2) APPLICATIONS: BRICK, MASONRY BLOCK, PRECAST PANELS, CURTAIN WALLS, METAL CLADDING, EIFS APPLICATIONS AND GENERAL BUILDING FACADES. ALL APPLICATIONS REQUIRE A STRUCTURAL SIDEWALL SUBSTRATE.
- 3) MM HIGH STRENGTH EPOXY SIDEWALL ADHESIVE REQUIRED ON ALL SIZES ABOVE SIF-400.
- 4) SILICONE FACE SEAL IS AVAILABLE IN EITHER PECORA 890NST OR DOW CORNING 790 SILICONE.



SIF Series Expansion Joint
(Wall-to-Wall)



SIF Series Expansion Joint
(Wall Corner)



50 MM WAY
PENDERGRASS, GA. 30567
PHONE: 706-824-7500
866-506-6929
FAX: 706-824-7501

www.mm-usa.com

For Spec-Data, Installation Guides, or movement requirements, contact MMSC

RIGHTS OF DESIGN

All rights of design, detail, engineering and/or invention contained herein are the property of MM Systems Corporation and hereby reserved and are not to be reproduced or provided to any other party. MM Systems Corporation reserves the right to amend or withdraw any information contained herein without notice and will not be liable for any inaccuracy or ambiguity of said information.

Silicone Impregnated Foam Expansion Joint

SIF Series

Drawn by:

DMW

Scale:

NTS

Drawing Number:

Sheet: 1 OF 1

Issue Date:
03-24-2015

30750-01