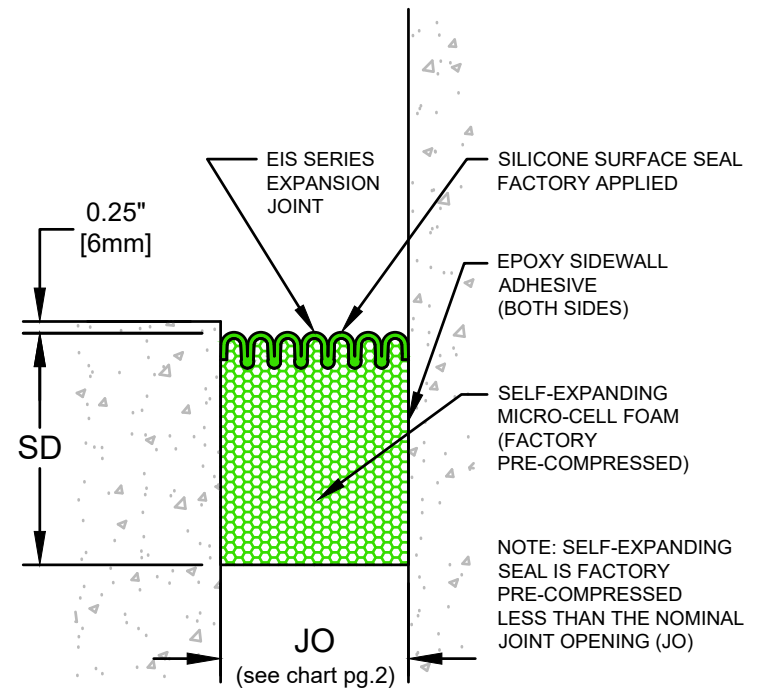


**EIS Series Expansion Joint
(Slab-to-Slab)**



**EIS Series Expansion Joint
(Slab-to-Wall)**



50 MM WAY
PENDERGRASS, GA. 30567
706-824-7500 PHONE
800-241-3460 TOLL FREE
706-824-7501 FAX

www.mm-usa.com

For Spec-Data, Install Guides, and other data visit www.mm-usa.com

RIGHTS OF DESIGN

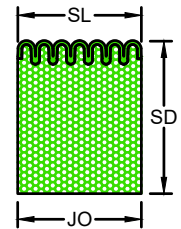
All rights of design, detail, engineering and/or invention contained herein are the property of MM Systems and hereby reserved and are not to be reproduced or provided to any other party. MM Systems reserves the right to amend or withdraw any information contained herein without notice and will not be liable for any inaccuracy or ambiguity of said information.

**Expanding Impregnated Seal Expansion Joint
EIS Series**

Drawn by: MVP	Scale: NTS	Drawing Number: 31650-01
SHT. 1 OF 2	Issue Date: 05/08/2020	

EIS SERIES EXPANSION JOINT MOVEMENT CHART

Model Number	Joint Opening (JO ^N)		Sight Line (SL ^N)		Thermal Movement (JO ^T)				Seismic Movement (JO ^S)				Total (JO ^A) Movement		Seal Depth (SD)	
	Nominal		Nominal		Minimum		Maximum		Minimum		Maximum					
EIS-050	0.50	13	0.50	13	0.250	6	0.750	19	0.250	6	0.750	19	0.50	13	2.00	51
EIS-063	0.63	16	0.63	16	0.315	8	0.945	24	0.315	8	0.945	24	0.63	16	2.00	51
EIS-075	0.75	19	0.75	19	0.375	10	1.125	29	0.375	10	1.125	29	0.75	19	2.00	51
EIS-100	1.00	25	1.00	25	0.500	13	1.500	38	0.500	13	1.500	38	1.00	25	2.00	51
EIS-125	1.25	32	1.25	32	0.625	16	1.875	48	0.625	16	1.875	48	1.25	32	2.00	51
EIS-150	1.50	38	1.50	38	0.750	19	2.250	57	0.750	19	2.250	57	1.50	38	2.00	51
EIS-175	1.75	44	1.75	44	0.875	22	2.625	67	0.875	22	2.625	67	1.75	44	2.00	51
▼ Cover plate required on all sizes 2.00 inch and larger ▼																
EIS-200	2.00	51	2.00	51	1.000	25	3.000	76	1.000	25	3.000	76	2.00	51	3.00	76
EIS-225	2.25	57	2.25	57	1.125	29	3.375	86	1.125	29	3.375	86	2.25	57	3.00	76
EIS-250	2.50	64	2.50	64	1.250	32	3.750	95	1.250	32	3.750	95	2.50	64	3.00	76
EIS-275	2.75	70	2.75	70	1.375	35	4.125	105	1.375	35	4.125	105	2.75	70	3.00	76
EIS-300	3.00	76	3.00	76	1.500	38	4.500	114	1.500	38	4.500	114	3.00	76	3.00	76
EIS-325	3.25	83	3.25	83	1.625	41	4.875	124	1.625	41	4.875	124	3.25	83	3.00	76
EIS-350	3.50	89	3.50	89	1.750	44	5.250	133	1.750	44	5.250	133	3.50	89	3.00	76
EIS-375	3.75	95	3.75	95	1.875	48	5.625	143	1.875	48	5.625	143	3.75	95	3.00	76
EIS-400	4.00	102	4.00	102	2.000	51	6.000	152	2.000	51	6.000	152	4.00	102	4.00	102
EIS-425	4.25	108	4.25	108	2.125	54	6.375	162	2.125	54	6.375	162	4.25	108	4.00	102
EIS-450	4.50	114	4.50	114	2.250	57	6.750	178	2.250	57	6.750	178	4.50	114	4.00	102
EIS-475	4.75	121	4.75	121	2.375	60	7.125	181	2.375	60	7.125	181	4.75	121	4.00	102
EIS-500	5.00	127	5.00	127	2.500	64	7.500	191	2.500	64	7.500	191	5.00	127	4.00	102
EIS-525	5.25	133	5.25	133	2.625	67	7.875	200	2.625	67	7.875	200	5.25	133	6.00	152
EIS-550	5.50	140	5.50	140	2.750	70	8.125	210	2.750	70	8.125	210	5.50	140	6.00	152
EIS-575	5.75	146	5.75	146	2.875	73	8.625	219	2.875	73	8.625	219	5.75	146	6.00	152
EIS-600	6.00	152	6.00	152	3.000	76	9.000	229	3.000	76	9.000	229	6.00	152	6.00	152
EIS-650	6.50	165	6.50	165	3.250	83	9.750	248	3.250	83	9.750	248	6.50	165	6.00	152
EIS-700	7.00	178	7.00	178	3.500	89	10.500	267	3.500	89	10.500	267	7.00	178	6.00	152
EIS-750	7.50	191	7.50	191	3.750	95	11.250	286	3.750	95	11.250	286	7.50	191	6.00	152
EIS-800	8.00	203	8.00	203	4.000	102	12.000	305	4.000	102	12.000	305	8.00	203	6.00	152



SINGLE SIDE SILICONE

Dimension shown in **inches** (bold) and millimeters. Contact MM Systems for larger system sizes.

Cover plate required on all sizes 2 inch and larger.

See EIS-Plus for seals not requiring mandatory cover plates.

Refer to the EIS AutoCAD file for individual seal drawings.

50 MM WAY
PENDERGRASS, GA. 30567
706-824-7500 PHONE
800-241-3460 TOLL FREE
706-824-7501 FAX

www.mm-usa.com

For Spec-Data, Install Guides, and other data visit www.mm-usa.com

RIGHTS OF DESIGN

All rights of design, detail, engineering and/or invention contained herein are the property of MM Systems and hereby reserved and are not to be reproduced or provided to any other party. MM Systems reserves the right to amend or withdraw any information contained herein without notice and will not be liable for any inaccuracy or ambiguity of said information.

Expanding Impregnated Seal Expansion Joint

EIS Series

Drawn by: MVP	Scale: NTS	Drawing Number:
SHT. 2 OF 2	Issue Date: 05/08/2020	31650-02