

Fundermax

HPL projects in the health sector

Durable facades
Maintenance-free
Energy-efficient building





Durable facades
Maintenance-free
Energy-efficient building





Durable facades
Maintenance-free
Energy-efficient building



Smart facades

Moving parts for installing
diagnostic imaging
equipment



Reception/Admission



Proposed solutions

Inner lining

Public service desks

Antibacterial furniture

Products

Interior Max Compact

Max HGS Aptic

Max Superfront

Benefits

Non-maintenance requirements

Easy to install

Non-porous surface – Anti-graffiti and easily disinfected, as well as easy to clean and maintain

Resistant to impacts, scratches and abrasion

No stretcher guard required

FUNDERMAX®

Central and lift rooms



Proposed solutions **FUNDERMAX**®

Durable coatings

Variety of color and finish options

Products

Max Compact Interior 6/8mm

Benefits

Always clean and anti-fingerprint product

Non-porous – easily disinfectable, as well as easy to clean and maintain

Durable, resistant to heavy traffic, shocks, scratches and abrasion

No stretcher guard required

Hospitality



Proposed solutions

FUNDERMAX®

Antibacterial inner lining

Removable liner for service maintenance

Antibacterial Interior Furniture

Products

Cladding

Max Compact Interior 6mm

Furniture

Maximum compact interior 10-12mm,

Benefits

Antibacterial

Wash-resistant, even with aggressive cleaners

Durable, resistant to impacts, scratches and abrasion

Non-porous – Anti-graffiti and easily disinfectable, as well as easy to clean and maintain

Quick access to services

No stretcher guard required

Food areas



Solutions proposal

FUNDERMAX®

Furniture tables for dining rooms

Industrial kitchens

Outdoor furniture

Products

Max Compact Exterior NT 6-12mm

Max Compact interior 10-12mm,

Benefits

Antibacterial, FDA food contact

Non-porous - easily disinfectable, as well as easy to clean and maintain

Durable, weather, impact, scratch and abrasion resistant

Diagnostic Support areas



Solutions proposal

FUNDERMAX®

Lab Countertops

Diagnostic Imaging Rooms

Furniture tables for blood collection

Patient changing booths

Product

Max compact RE/IP for laboratories

Max Compact interior 10-12mm

Benefits

Antibacterial

Resistant to acids, solvents, etc.

Non-porous - easily disinfectable, as well as easy to clean and maintain

Durable to bumps, scratches and abrasion

Sterilization and Laundry



Solutions

FUNDERMAX®

Furniture for the management of used clothing

Furniture for the management of dirty material

Lab/room countertops where disinfectable work surfaces are needed

Product

Max compact RE/IP for laboratories

Max Compact interior 10-12mm,

Benefits

Resistant to acids, solvents, etc., which ensure extreme cleanliness.

Non-porous - easily disinfectable, as well as easy to clean and maintain

Durable, weatherproof, shock, scratch and abrasion resistant

Pathological/anatomy/morgue



Solutions

FUNDERMAX®

Lab/room countertops where disinfectable work surfaces are needed

Product

Max compact RE/IP for laboratories

Max Compact interior 10-12mm,

Benefits

Resistant to acids, solvents, etc., which ensure extreme cleanliness.

Non-porous - easily disinfectable, as well as easy to clean and maintain

Durable, weatherproof, shock, scratch and abrasion resistant

Dressing rooms



Solutions

Changing Lockers

Cleanrooms

Shower cabins

Changing room furniture

Product

Max Compact interior 10-12mm,

Benefits

Waterproof, does not retain odors

Non-porous - easily disinfectable, as well as easy to clean and maintain

Durable, resistant to shocks, scratches and anti-graffiti.

FUNDERMAX®

Machines rooms



Solutions

FUNDERMAX®

Coatings for fire room insulation

Modular panels

Product

Max compact interior mLook

Max Compact interior 3-12mm

Benefits

Fire Resistant, Class A

Non-porous - easily disinfectable,
Durable, weatherproof, shockproof,
scratch and abrasion resistant

Surgery Center



Solutions

Modular panels

Doors

Furniture

Finishes

Product

mLook

Max Compact interior 10-12mm,

Benefits

Flexibility and speed of construction

Easy access to repair services

Antibacterial and long-lasting

FUNDERMAX®

Outpatient consultations



Solutions

Interior cladding

Durable furniture

Product

Finishes

Max Compact interior 6mm

Installation with or without ventilation

Glued/hung with or without sanitary skirting board

Furniture/Cabins

Max Compact interior 10-12mm, with glued/traditional fasteners

Benefits

Durable, resistant to shocks, scratches and even aggressive washes

Easy to build

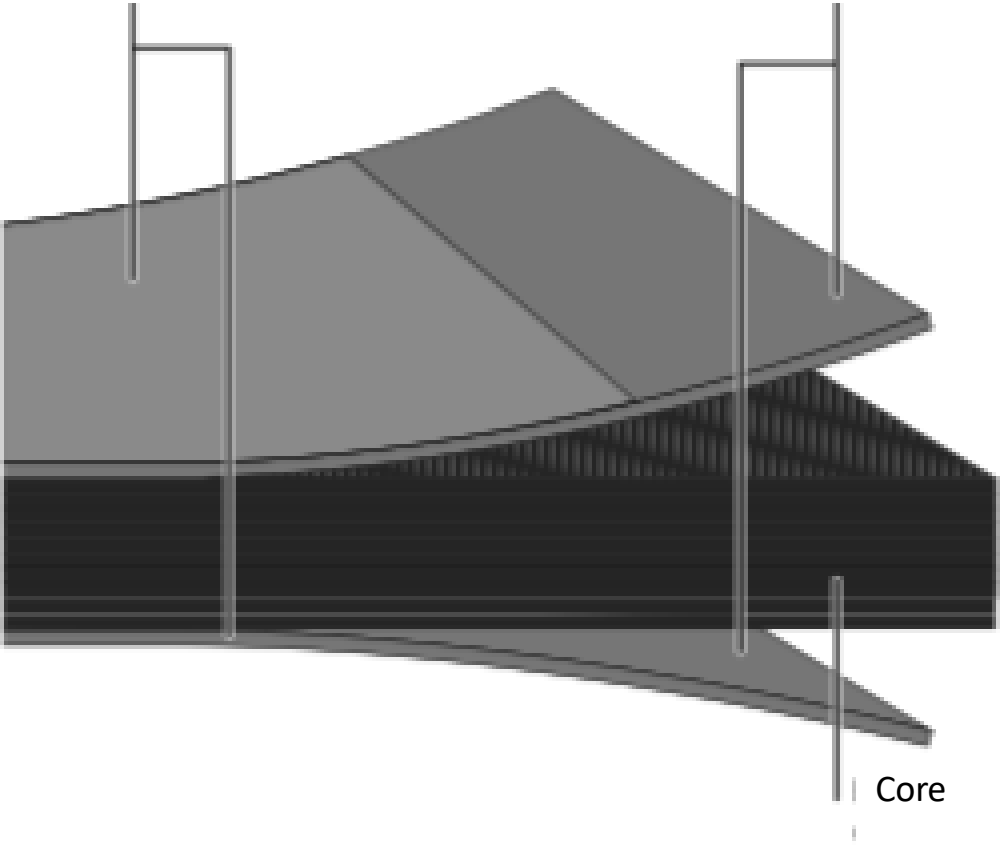
Non gurney guard required

What is the HPL?

Fundermax

Acrylic PU coating

Double side decor

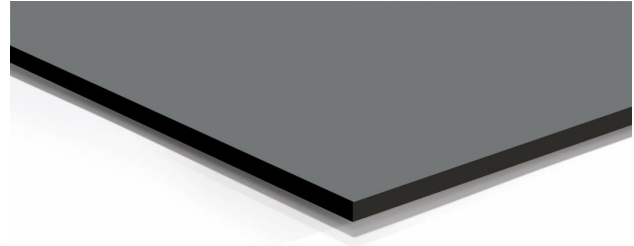


What is it?

Composición

- **The HPL core** is composed of several layers of Kraft paper impregnated with phenolic resins and melamine resins for the color cores.
- **Panel Core:** The HPL core is composed of multiple layers of Kraft paper impregnated with phenolic resins and melamine resins for the color cores.
- **Panel surface:** Both sides are made of decorative paper impregnated with melamine resins and doubly hardened by acrylic resins in a two-pass process.
All panels have both sides useful.

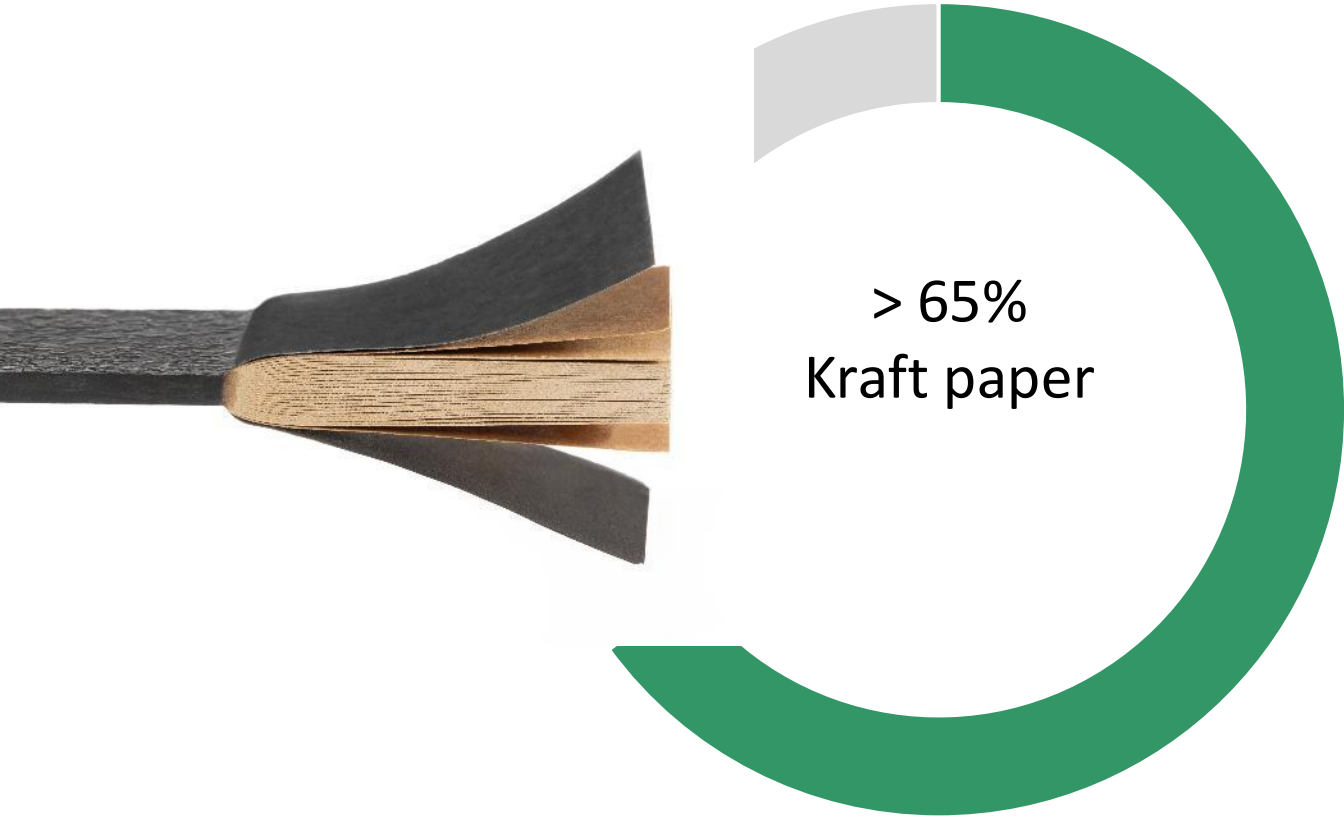
Black Kraft or colour through Core



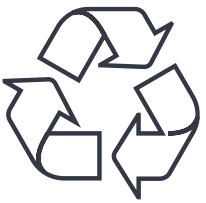
Fundermax

Max Compact Exterior

Made from renewable raw materials or recycled paper



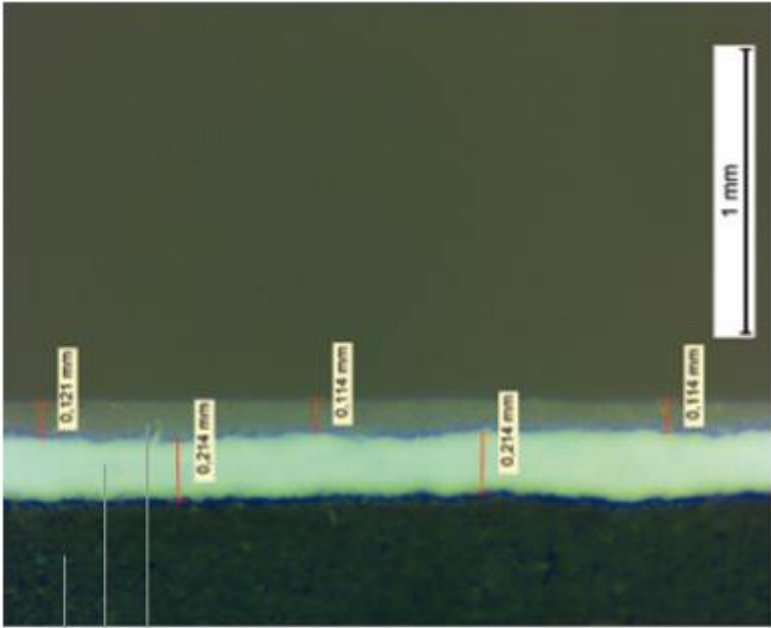
Max Compact Exterior
Kraft paper from sustainably managed forests.



Max Compact Interior
Kraft paper made from recycled cardboard (OCC).
Subsidiary of Fundermax in Norway

Why HPL Fundermax is unique?

Fundermax Technology



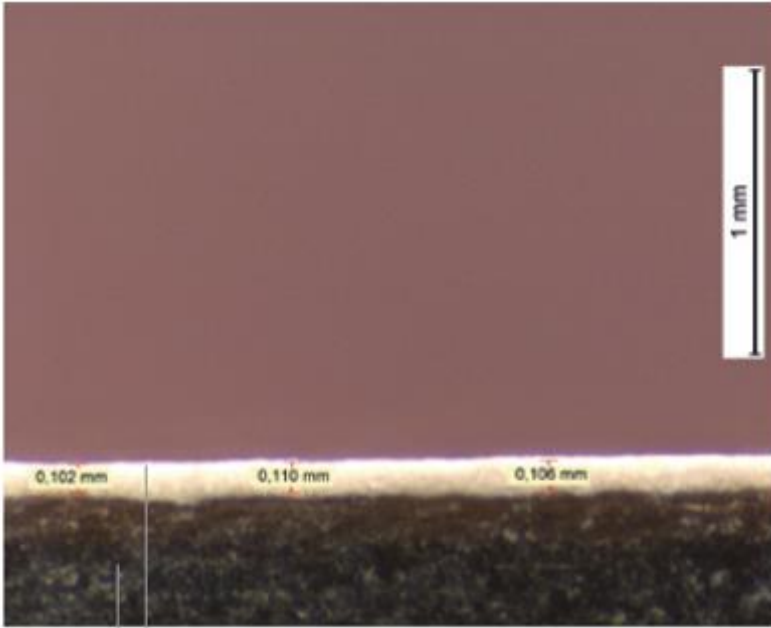
- EXTRA THICK DOUBLE-HARDENED URETHANE-ACRYLIC SURFACE
- EXTRA THICK DECOR LAYER
- HPL-CORE (JET-BLACK, PHENOL IMPREGNATED KRAFT PAPER)

EBC Technology



- ELECTRONIC BEAM CURED (EBC) ACRYLIC SURFACE
- DECOR LAYER
- FIBRE OR HPL CORE

Melamine Technology



- MELAMINE DECOR SURFACE
- HPL CORE

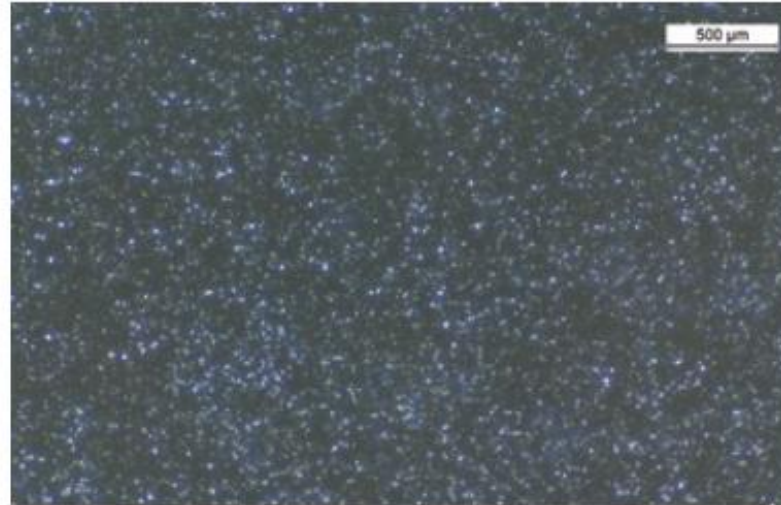
Why HPL Fundermax is unique?

Fundermax Technology



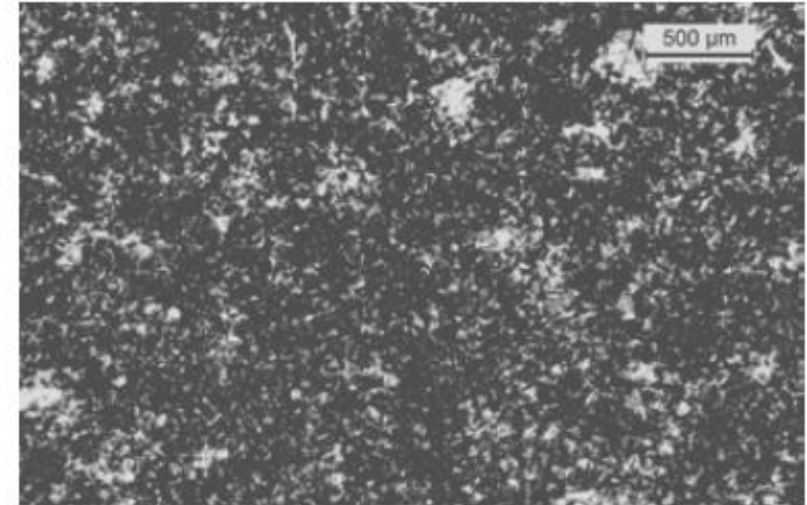
NO SMALL PORES VISIBLE

EBC Technology



MICROPORES VISIBLE

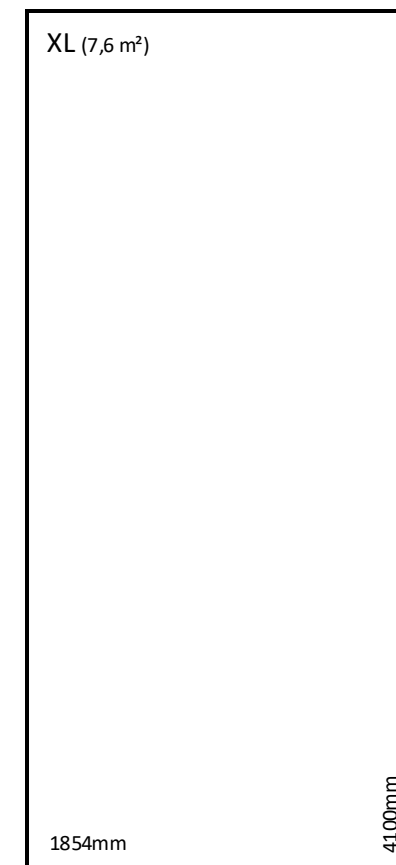
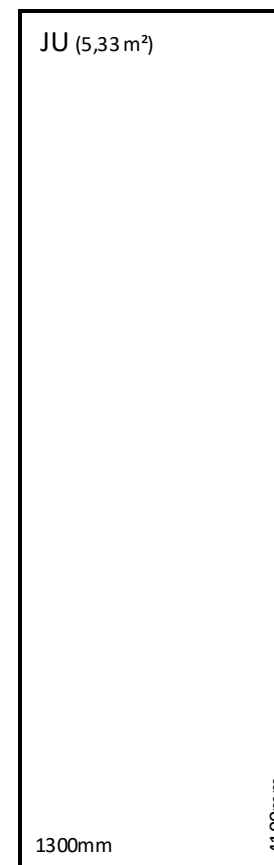
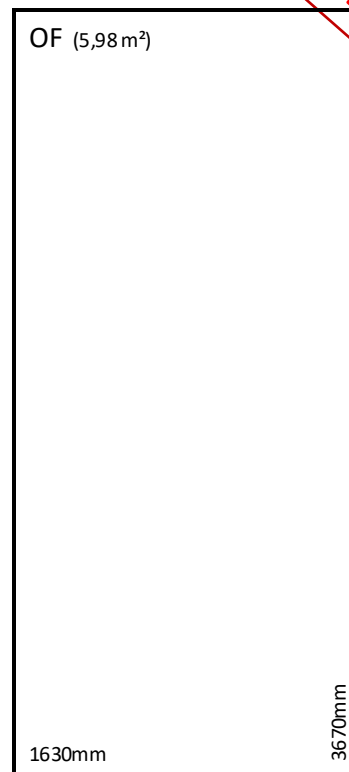
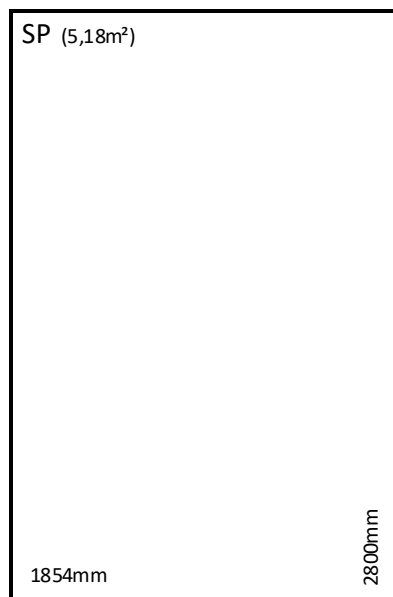
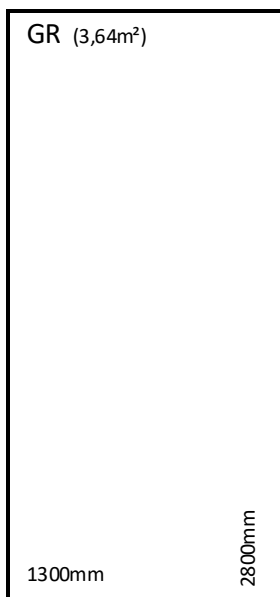
Melamine Technology



PORES VISIBLE

Exterior 2.3 Essential

New format



5 formats, 132 decors, surface NT, thicknesses 2, 4, 6, 8, 10, 12, 13mm

Features vs substitutes

- Anti-graffiti
- Hailproof
- Easy to work with, on-site adjustments and no need to seal the cuts
- +more than 140 decorative
- Digital printing
- Scratch, moisture, and chemical resistance
- 10-year warranty
- +33 years of certified color loss
- Environmental Certifications and Sanitary Certifications
- Maintenance-free



About Fundermax

Fundermax

Juan Afonso

C&S Latam sales manager

Fundermax

Sustainable. Innovative. Creative.

1,200 employees worldwide.

400 million euros in turnover per year.

12 million m2 of compact capacity.

Investment of 25 million euros per year.

3 production sites in Austria

6 International Offices (FR, CH, PL, IT, IND, USA)

80% export

Owner: Constantia Industries AG





FunderMax France SARL
Lyon, France.

FunderMax Polska Sp.z.o.o.
Krakow, Poland

FunderMax Swiss AG
Kleindöttingen, Switzerland.

FunderMax Italy S.R.L.
Cervignano del Friuli, Italy.

Ranheim Paper & Board
Ranheim, Norway.

FunderMax North America Inc.
Charlotte, USA.

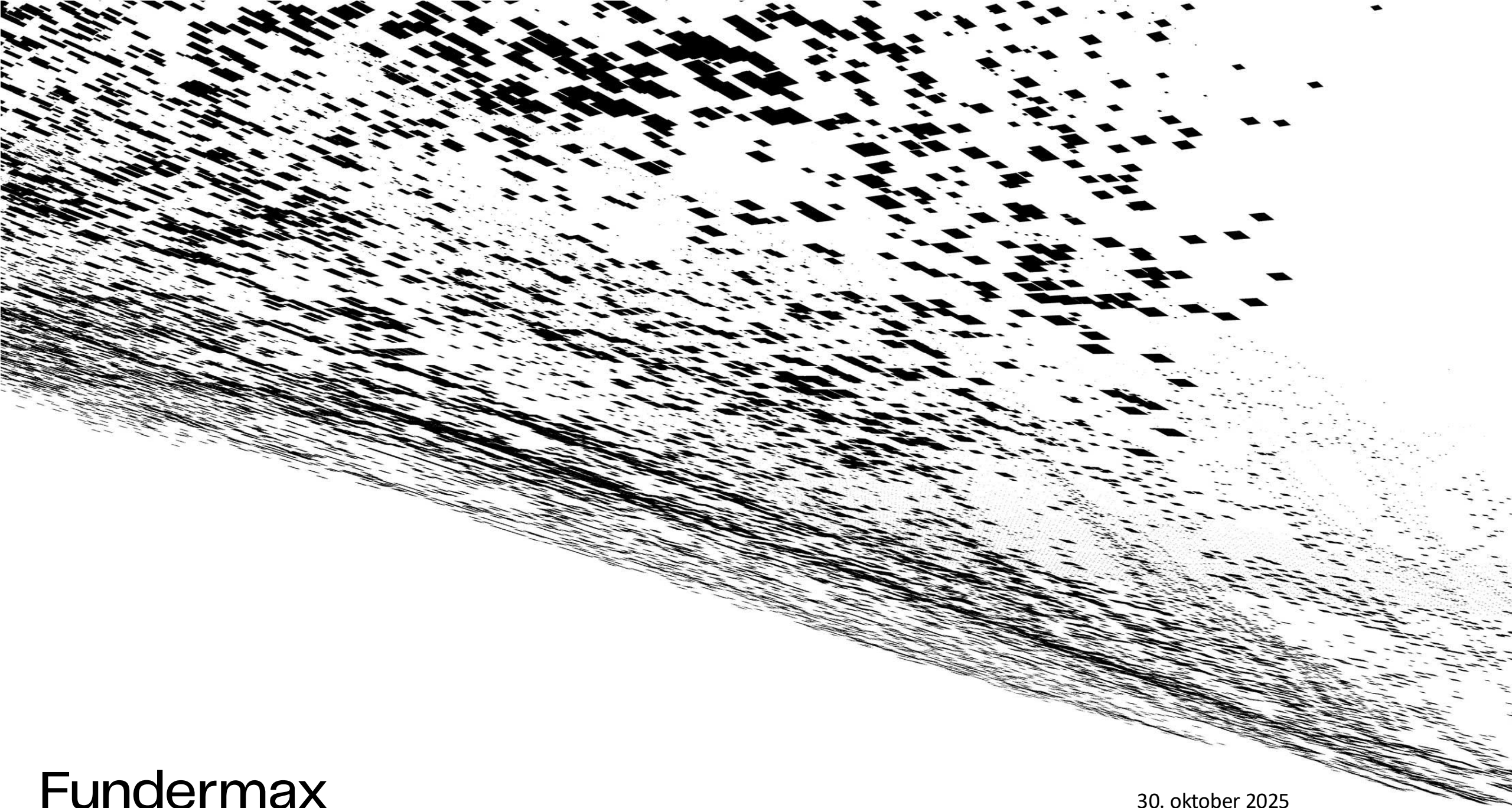
FunderMax India Private Ltd.
Bangalore, India.

FunderMax production site
Wr. Neudorf, Austria.

FunderMax production site
Neudörf, Austria.

FunderMax Headquater and production site
St.Veit an der Glan, Austria.

FunderMax international.
Austria. France. Switzerland.
Italy. Poland. India. USA.



Fundermax

30. oktober 2025