

Vinyl Composition Tile (VCT) and BioBased Tile[®] (BBT[®])



RAFFIA™
ChromaSpin™
Stonetex®
ARTEFFECTS®
Companion Square®

Feature™ Tile & Strips
Rave®
MultiColor™
Imperial® Texture

STRIATIONS BBT®
MIGRATIONS®

linoleum

biobased tile®

lvt

sheet

vct

hardwood

laminate

specialty flooring

accessories



Striations T3600 azure and T3603 twilight

BBT[®] BioBased Tile[®]

An Affordable Greener Option with Enhanced Performance

- A greener product option at an affordable price point
- Same proven, long product life as other resilient flooring materials
- More than 5 times greater resistance to impact and more than 2.5 times greater resistance to cracking from uneven subfloors than standard composition tile
- Won the International Design Award in 2012
- Won Starnet Award in 2012
- Won Architect's Choice and Best in Show for the 2012 Symposium Distinction Awards
- Won GreenStep Product Award in 2012
- Won Silver 2012 Nightingale Award
- Won 2012 Good Design Award
- Only product to meet the new ASTM F 2982 standard



Size Options

- Striations offers a unique new 12 in. x 24 in. tile and Migrations offers a standard 12 in. x 12 in. tile size

Enhanced Range of Environmental Benefits

- BioBased, non-PVC formulation throughout tile
- Contains patent-pending BioStride[®] polymer made with rapidly renewable, US-grown plant ingredients
- 10% pre-consumer recycled content
- Low VOC Emissions: FloorScore[™] certified, meets the requirements of CDPH Standard Method V1.1-2010, compliant with LEED[®] EQ Credit 4.3
- Composed of 85% North American limestone, an abundant natural resource
- Earned NSF/ANSI 332 Gold Certification

STRIATIONS BBT®

BioBased Tile®



T3609 malted milk



T3608 warm gray



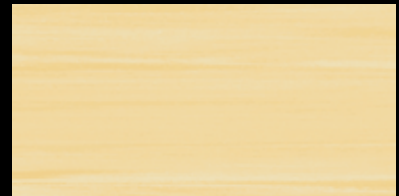
T3607 saddle



T3600 azure



T3606 green earth



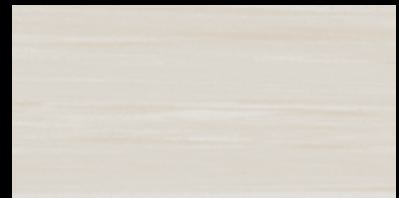
T3605 sunshine



T3601 atmosphere



T3610 haze



T3614 bisque



T3602 steel



T3611 mushroom



T3615 honey



T3603 twilight



T3612 stardust



T3616 tea time



T3604 midnight



T3613 java

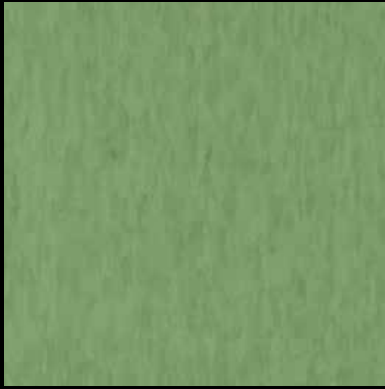


T3617 forest floor

Dark-colored patterns may be susceptible to scratch whitening. These colors may require more frequent maintenance if used in field areas: T3604, T3606, T3607, T3613, T3617.

MIGRATIONS®

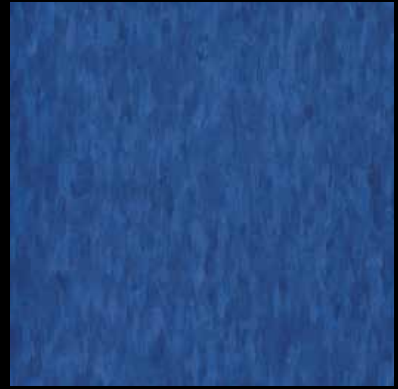
BioBased Tile®



T3527 green grass



T3524 red berry



T3526 blue waters



T3522
lemon squeeze



T3515
straw yellow



T3504
ice white



T3511
quartz white



T3512
sandy beige



T3523
orange peel



T3516
spiced orange



T3505
powder gray



T3510
natural beige



T3513
golden sands



T3525
violet grape



T3517
pepper red



T3506
glacier gray



T3503
ashen gray



T3514
loam brown



T3520
moss green



T3518
denim blue



T3507
metal gray



T3502
pumice gray



T3509
mushroom beige



T3521
summer green



T3519
washed indigo



T3500
basalt black



T3501
platinum gray



T3508
bark brown

Darker-colored patterns may be susceptible to scratch whitening. These colors may require more frequent maintenance if used in field areas: T3500, T3501, T3514, T3517, T3518, T3519, T3521, T3523, T3524, T3525, T3526, T3527.



Migrations T3501 platinum gray



RAFFIA™ 55800 snowdrift, 55802 charcoal dust, 55809 buttercup

VCT Vinyl Composition Tile

Responsible Choices

- Composed of 85% North American limestone, an abundant natural resource
- Three North American regional manufacturing locations reduce environmental impact from transportation
- Low VOC Emissions: FloorScore™ certified meets the requirements of CDPH Standard Method V1.1-2010, compliant with LEED® EQ Credit 4
- VCT Recycling Program
- Earned NSF/ANSI 332 Gold Certification



Size Options

- The first and only company to step outside the 12 in. x 12 in. box, Armstrong re-energizes vision and value with Stonetex® 18 in. x 18 in. and Raffia 12 in. x 24 in. tile, while still offering the traditional 12 in. x 12 in. option (see comparative data chart for size options by product)

Trusted Long Term Performance

- Decades of industry-leading performance and durability
- Leader in the industry for over 50 years
- High quality with a reliable warranty

RAFFIA[™]

VCT



55814
sage



55813
wave



55809
buttercup



55811
mesa



55812
sky



55800
snowdrift



55803
pearl



55806
butter



55801
platinum



55804
smoke



55807
golden blossom



55802
charcoal dust



55805
cocoa



55808
warm wheat

Darker-colored patterns may be susceptible to scratch whitening. These colors may require more frequent maintenance if used in field areas.

EXCELON® ChromaSpin™

VCT



54823
flash red



54817
deep yellow



54820
brilliant orange



54822
caminelle



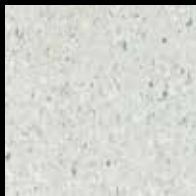
54827
cerulean



54830
chrome green



54831
olive



54800
zinc oxide



54805
aquatint



54810
blanco



54815
soft ochre



54818
india red



54801
paynes gray



54806
mezzotint



54811
encaustic



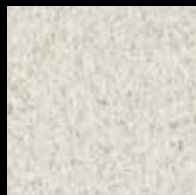
54816
raw sienna



54819
conte crayon



54802
carbonite



54807
primer white



54812
sepiatone



54821
alizarin crimson



54824
neodymium



54803
monotype



54808
silk



54813
durer brown



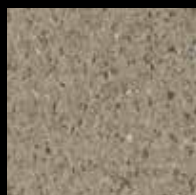
54825
mineral blue



54828
vermeer green



54804
monotype



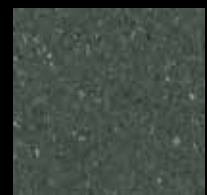
54809
chiaroscuro



54814
muslin



54826
windsor blue



54829
shadow green

Darker-colored patterns may be susceptible to scratch whitening. These colors may require more frequent maintenance if used in field areas: 54802, 54803, 54812, 54813, 54819, 54820, 54821, 54822, 54823, 54824, 54826, 54827, 54829, 54830, 54831.



ChromaSpin™ 54807 primer white, 54811 encaustic, 54813 durer brown, 54824 neodymium

EXCELON® Stonetex®

VCT

featuring **CONTINUUM™**
COLOR + DESIGN



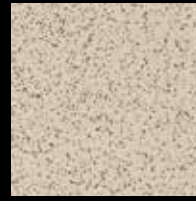
52140
chalk white



52125
granite gray



52127
stone white



52128
desert dust



52143
sandstone tan



52126
gravel blue



52161
charcoal



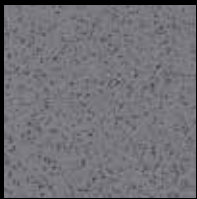
52122
pebble gray



52168
golden fossil



52149
cocoa brown



52160
hematite



52144
coal black



52147
pumice stone



52169
ammonite



52164
dark chocolate



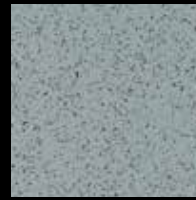
52139
limestone beige



52172
chamotte



52165
milky way



52141
flagstone blue



52180
spanish moss



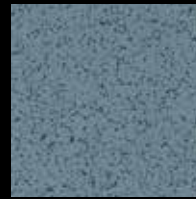
52156
bamboo yellow



52173
unfired clay



52166
mochaccino



52135
mineral dust



52155
forest moss



52170
golden bamboo



52157
clay red



52167
semi sweet



52148
blue spruce

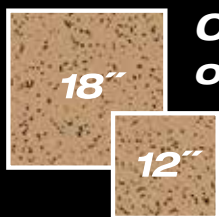


52154
leaf green

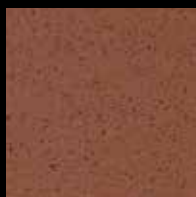
Darker-colored patterns may be susceptible to scratch whitening. These colors may require more frequent maintenance if used in field areas:
52144, 52147, 52148, 52149, 52154, 52157, 52161, 52164, 52167, 52169, 52179, 52183, 52186, 52189, 52194, 52199.



Stonetex® 52194 lapis, Imperial® Texture 51911 classic white



**Choice
of Sizes**



52189
roman clay



52179
black jewel orchid



52199
iguana



52194
lapis



52186
hermit shale



52202
lime rickey



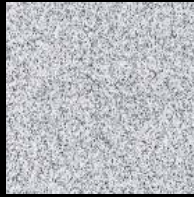
52183
golden honey

ARTEFFECTS®

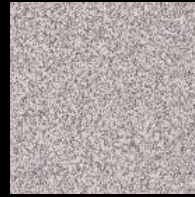
VCT



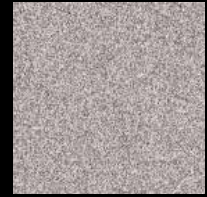
57213
charcoal stick



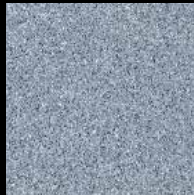
57215
zinc white



57203
pastel beige



57205
silver sable



57216
intaglio gray



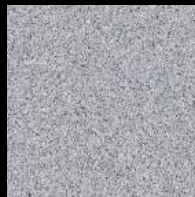
57217
antique papyrus



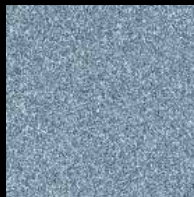
57210
umber green



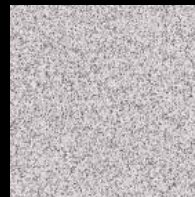
57200
parchment beige



57201
silverpoint



57209
water garden blue



57202
canvas beige

Darker-colored patterns may be susceptible to scratch whitening. This color may require more frequent maintenance if used in field areas: 57213.



Arteffects 57203 pastel beige, 57210 umber green, 57217 antique papyrus

EXCELON® Companion Square®

VCT

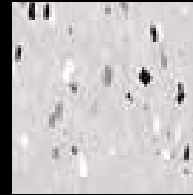


51983
party white

Darker-colored patterns may be susceptible to scratch whitening. This color may require more frequent maintenance if used in field areas: 51970.



51973
mono white



51972
mono gray



51970
mono black



51977
kaleidoscope white



51974
polychrome white



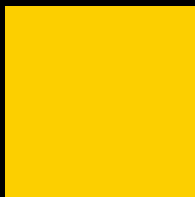
Companion Square 51983 party white,
Feature Tile 56806 red I, 56823 yellow II, 56812 blue II

EXCELON Feature™ Tile & Strips

VCT

Tile: 56_____

Strips: 50_____



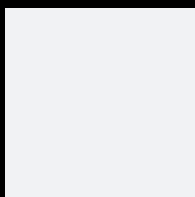
56823/50823
yellow II



56806/50806
red II



56812/50812
blue II



56830/50830
chalk II

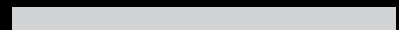


56790/50790
black I

Available Sizes:



12' x 12'



2' x 24'



4' x 24'

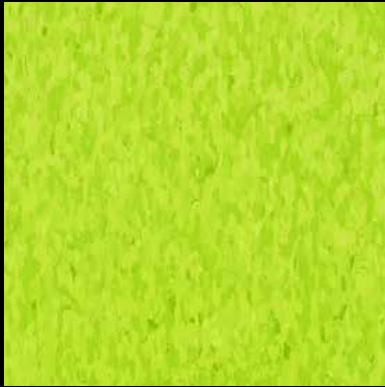


6' x 24'

Solid colored floors tend to show scratching and soiling more readily than patterned floors. We recommend not installing Feature Tile as full field installations or in high traffic areas.

Standard EXCELON® Rave®

VCT



57510
kickin' kiwi



57509
lemon lick



57514
shocking



57512
bikini blue



57516
screamin' pumpkin



57513
vicious violet



57511
grabbin' green



57515
hot lips



57517
bodacious blue



57518
white out

Darker-colored patterns may be susceptible to scratch whitening. These colors may require more frequent maintenance if used in field areas: 57511, 57512, 57513, 57514, 57515, 57517.



Rave 57510 kickin' kiwi, 57517 bodacious blue, Imperial Texture 51800 buttercream yellow, 51811 antique white

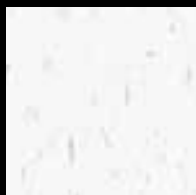
Standard EXCELON® MultiColor™

VCT



52520
faire white

Darker-colored patterns may be susceptible to scratch whitening. These colors may require more frequent maintenance if used in field areas: 52517, 52518, 52522.



52500
carnival white



52521
mint masquerade



52516
soleil yellow



52513
cirque white



52515
coaster greige



52517
jester red



52505
harlequin white



52506
rodeo fawn



52518
band blue



52514
jubilee white



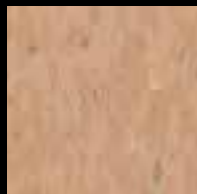
52523
animal crackers



52522
acrobat green



52525
pie car



52524
pageant spice



MultiColor 52505 harlequin white,
52516 soleil yellow

Standard EXCELON® Imperial® Texture

VCT



51910
classic black



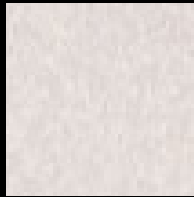
51941
polar white



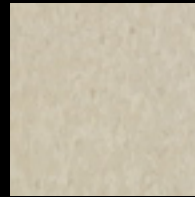
51899*
cool white



51811
antique white



51861
soft warm gray



51810
washed linen



51873
brushed sand



51911
classic white



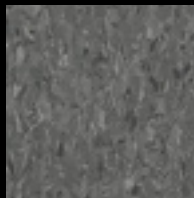
51904
sterling



51803
pearl white



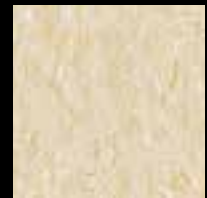
57501
nougat



51915
charcoal



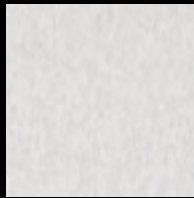
51804
earthstone greige



51809
desert beige



51883
dusty miller



51860
soft cool gray



51868
smokey brown



51805
camel beige



51876
mint cream



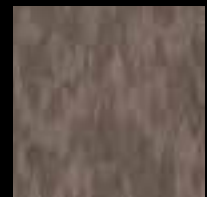
51938
willow green



51807
shadow blue



57502
café latte



51869
humus



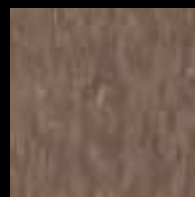
51872
tea garden green



51802
silver green



51916
dutch delft



57504
chocolate



51877
earth green

*1/8 in. and 3/32 in. stocked. All other patterns stocked in 1/8 in. with 3/32 in. available on a special order basis, minimum order quantity of 1,000 cartons or 45,000 sq. ft. (4,181 m²).



51812
lemon yellow



51816
cherry red



51944
tyrian purple



51820
marina blue



51824
sea green



51813
pumpkin orange



51880
maraschino



51818
violet bloom



51821
caribbean blue



51866
little green apple



51800
buttercream yellow



51814
pomegranate red



51881
blueberry



57508
blue dreams



51885
granny smith



51878
golden



57503
bubblegum



51934
lavender shadow



51932
lunar blue



51884
greenery



51867
cantaloupe



51943
cayenne red



57507
dusty plum



51882
serene blue



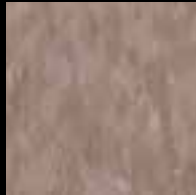
51947
basil green



51801
doeskin peach



51879
etruscan red



57505
rose hip



51946
gentian blue



57506
colorado stone



51942
curried caramel



51948
cinnamon brown



57500
purple brown



51874
grayed blue



51875
mid grayed blue

Darker-colored patterns may be susceptible to scratch whitening. These colors may require more frequent maintenance if used in field areas:
51813, 51814, 51816, 51818, 51820, 51821, 51824, 51868, 51869, 51874, 51879, 51880, 51882, 51884, 51910, 51942, 51943, 51944, 51946, 51947, 51948, 57500, 57503, 57504, 57505, 57506, 57507.

Standard EXCELON® Imperial® Texture Classics

VCT



51901
taupe



51836
shatter white*



51839
fortress white*



51929
sandy beach



51908
pewter



51858
sandrifft white*



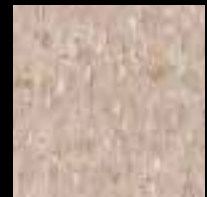
51928
pebble tan



51927
field gray



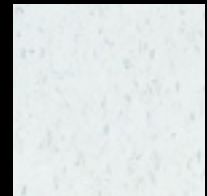
51830
cottage tan*



51905
hazelnut



51906
teal



51933
blue cloud



51903
blue/gray

*1/8 in. and 3/32 in. stocked. All other patterns stocked in 1/8 in. with 3/32 in. available on a special order basis, minimum order quantity of 1,000 cartons or 45,000 sq. ft. (4,181 m²).



Imperial[®] Texture 51812 lemon yellow, 51821 caribbean blue, 51866 little green apple, 51867 cantaloupe, 51873 brushed sand, 51880 maraschino, 51915 charcoal.

RECOMMENDED APPLICATIONS

This chart provides an overview of recommendations by end-use market and for specific spaces. Use these recommendations as a guideline for selecting Armstrong flooring for your application.

HEALTHCARE/HOSPITAL (a)

Products	Around Swimming Pool	Around Whirlpool/Spa	Cafeteria, Dining Area (e)	Chapel	Commercial Parking Garage Walkway	Computer Training Room (e)	Corridor	Critical/Intensive Care	Data Warehousing	Dialysis (i)	Dry Physical Therapy	Elevator	Emergency Room	Exam/Procedure Room	Gift Shop
BBT®															
STRIATIONS BBT®	N	N (3)	R	R	N	H	H	R	N	N (2)	H	R	R	R	R
MIGRATIONS®	N	N (3)	R	R	N	H	H	R	N	N (2)	H	R	R	R	R
VCT															
RAFFIA™	N	N (3)	R	R	N	H	H	R	N	N (2)	H	R	R	R	R
ChromaSpin™	N	N (3)	R	R	N	H	H	R	N	N (2)	H	R	R	R	R
EXCELON® Stonetex®	N	N (3)	R	R	N	H	H	R	N	N (2)	H	R	R	R	R
ARTEFFECTS®	N	N (3)	R	R	N	H	H	R	N	N (2)	H	N	R	R	R
Standard EXCELON® MultiColor™	N	N (3)	R	R	N	H	H	R	N	N (2)	H	R	R	R	R
Standard EXCELON® Imperial® Texture	N	N (3)	R	R	N	H	H	R	N	N (2)	H	R	R	R	R
Standard EXCELON® Imperial® Texture Rave®	N	N (3)	R	R	N	H	H	R	N	N (2)	H	R	R	R	R
EXCELON® Companion Square®	N	N (3)	R	R	N	H	H	R	N	N (2)	H	R	R	R	R
EXCELON® Feature™ Tile & Strips (d)	N	N (3)	N	N	N	H	H	R	N	N (2)	R	R	R	R	R

EDUCATION/INSTITUTIONAL

Products	Around Swimming Pool	Auditorium	Cafeteria, Dining Area (e)	Classroom/Lecture Hall	Commercial Parking Garage Walkway	Computer Repair Area	Computer Training Room (e)	Corridor	Data Warehousing	Dormitory Room	Elevator	Entryway/Foyer (i)	Food Service Area (e)
BBT®													
Striations	N	H	R	H	N	N	H	H	N	H	R	N	R (i)
Migrations	N	H	R	H	N	N	H	H	N	H	R	N	R (i)
VCT													
Raffia	N	H	R	H	N	N	H	H	N	H	R	N	R (i)
ChromaSpin	N	H	R	H	N	N	H	H	N	H	R	N	R (i)
Excelon Stonetex	N	H	R	H	N	N	H	H	N	H	R	N	R (i)
Arteffects	N	R	R	R	N	N	H	H	N	R	N	N	R (i)
Standard Excelon MultiColor	N	H	R	H	N	N	H	H	N	H	R	N	R (i)
Standard Excelon Imperial Texture	N	H	R	H	N	N	H	H	N	H	R	N	R (i)
Standard Excelon Imperial Texture Rave	N	H	R	H	N	N	H	H	N	H	R	N	R (i)
Excelon Companion Square	N	H	R	H	N	N	H	H	N	H	R	N	R (i)
Excelon Feature Tile & Strips (d)	N	H	R	R	N	N	H	R	N	H	R	N	R (i)

NOTES:

- Numerical footnotes apply to the space requirements.
- Alpha footnotes apply to the product's suitability for the space. The numerical and alpha footnotes are consistent across all Recommended Applications Charts [e.g., (a) is the same footnote for linoleum as it is for vinyl, etc.]. Depending upon the category, product and space requirements, some footnotes may not appear.
- In addition to spaces listed on these charts:
 - Armstrong floors may be used on stair steps, risers and landings. A manufactured slip-retardant nosing should always be applied on steps.
 - Armstrong floors are **not recommended** for exterior use, for interior spaces where pointed spike golf or track shoes will be used, or in areas where the floor will be subjected to unusually concentrated static or dynamic loads.
 - Armstrong floors **should not be used** as wall covering or wall surfacing.

- (a) In most cases veterinary applications are similar
- (b) Only operating rooms not requiring conductive flooring
- (c) Only recommended for accents and borders
- (d) Armstrong floors are not recommended for commercial kitchens and commercial food processing areas, including behind fast-food counters
- (g) Most Armstrong floors are not recommended for heavy industrial areas.
- (i) No standing water walk-off mats required
- (l) Not recommended in laboratories that require special decontamination procedures on surfaces, including floors

- (1) Aseptic Area - Hygienic conditions are of critical importance
- (2) Water Resistance - Wet area installation is needed (flash covering, sealed seams)
- (3) Slip Retardance - A more secure walking surface is required
- (4) Surface Unevenness - The flooring surface should not interfere with chair or cart movements
- (5) Static control flooring is normally required in this area
- (6) Not recommended in areas that require electrostatic discharge control

H = Highly Recommended

The best flooring choice(s) for the space.

R = Recommended

Flooring choice(s) that are suitable for the space.

N = Not Recommended

Flooring that should not be used for the space.

• The ratings of H, R or N are based on an evaluation of the performance, cost and aesthetic requirements of the space.

	Hydro Physical Therapy	Hyperbaric Room	Labor Delivery Room	Laboratory	Lavatory	Lobby	Nurse's Station	Office/Admin./Conf. Room	Operating Room (b)	Patient Room	Pharmacy	Ramp/Ramped Corridor (Dry)	Scrub Area	Stairway/Landing	Staff Lounge	Telecommunications Center	Utility/Storage Room	Waiting Room
	N (3)	N (6)	N	R (I)	R	R	H	R	N (1)	R	H	N (3)	N (1)	R	R	N	H	H
	N (3)	N (6)	N	R (I)	R	R	H	R	N (1)	R	H	N (3)	N (1)	R	R	N	H	H
	N (3)	N (6)	N	R (I)	R	R	H	R	N (1)	R	H	N (3)	N (1)	R	R	N	R	H
	N (3)	N (6)	N	R (I)	R	R	R	R	N (1)	R	H	N (3)	N (1)	R	R	N	R	R
	N (3)	N (6)	N	R (I)	R	R	H	R	N (1)	R	H	N (3)	N (1)	R	R	N	H	H
	N (3)	N (6)	N	R (I)	R	R	H	R	N (1)	R	H	N (3)	N (1)	R	R	N	H	H
	N (3)	N (6)	N	R (I)	R	R	H	R	N (1)	R	H	N (3)	N (1)	R	R	N	H	H
	N (3)	N (6)	N	R (I)	R	R	H	R	N (1)	R	H	N (3)	N (1)	R	R	N	H	H
	N (3)	N (6)	N	R (I)	R	R	H	R	N (1)	R	H	N (3)	N (1)	R	R	N	H	H
	N (3)	N (6)	N	R (I)	R	R	H	R	N (1)	R	H	N (3)	N (1)	R	R	N	R	R

	Gymnasium	Laboratory	Lavatory	Library	Locker Room (no spikes)	Multipurpose/Cafeterium	Office/Administrative/Conference Room	Ramp/Ramped Corridor (Dry)	Shower/Shower Room	Stairway/Landing	Teacher's Lounge	Telecommunications Center	Utility/Storage Area
	H	R (I)	R	R	N (3)	H	R	N (3)	N (3)	R	H	N	H
	H	R (I)	R	R	N (3)	H	R	N (3)	N (3)	R	H	N	H
	H	R (I)	R	R	N (3)	H	R	N (3)	N (3)	R	H	N	H
	H	R (I)	R	R	N (3)	H	R	N (3)	N (3)	R	H	N	H
	R	R (I)	R	R	N (3)	R	R	N (3)	N (3)	R	R	N	R
	H	R (I)	R	R	N (3)	H	R	N (3)	N (3)	R	H	N	H
	H	R (I)	R	R	N (3)	H	R	N (3)	N (3)	R	H	N	H
	H	R (I)	R	R	N (3)	H	R	N (3)	N (3)	R	H	N	H
	H	R (I)	R	R	N (3)	H	R	N (3)	N (3)	R	H	N	H
	H	R (I)	R	R	N (3)	H	R	N (3)	N (3)	R	H	N	H
	H	R (I)	R	R	N (3)	H	R	N (3)	N (3)	R	H	N	H
	H	R (I)	R	R	N (3)	H	R	N (3)	N (3)	R	H	N	H
	H	R (I)	R	R	N (3)	H	R	N (3)	N (3)	N	R	N	R

RECOMMENDED APPLICATIONS

HOSPITALITY

Products	Around Swimming Pool	Around Whirlpool/Spa	Commercial Parking Garage/Walkway	Corridor	Dance Floor	Dining Area (e)	Elevator	Entryway/Foyer (f)	Exercise Room
BBT®									
STRIATIONS BBT®	N	N (3)	N	H	R	R	R	N	R
MIGRATIONS®	N	N (3)	N	H	R	R	R	N	R
VCT									
RAFFIA™	N	N (3)	N	H	R	R	R	N	R
ChromaSpin™	N	N (3)	N	H	R	R	R	N	R
EXCELON® Stonetex®	N	N (3)	N	H	R	R	R	N	R
ARTEFFECTS®	N	N (3)	N	H	R	R	N	N	R
Standard EXCELON® MultiColor™	N	N (3)	N	H	R	R	R	N	R
Standard EXCELON® Imperial® Texture	N	N (3)	N	H	R	R	R	N	R
Standard EXCELON® Imperial® Texture Rave®	N	N (3)	N	H	R	R	R	N	R
EXCELON® Companion Square®	N	N (3)	N	H	R	R	R	N	R
EXCELON® Feature™ Tile & Strips (d)	N	N (3)	N	H	R	R	R	N	R

RETAIL/STORES

Products	Automobile Showroom	Checkout/Cash Wrap	Computer Repair Area	Commercial Kitchen	Entryway/Foyer (f)	Fast Food Counter (behind)	Fast Food Counter (front)	Floral Area/Garden Center	Food Service (e)
BBT®									
Striations	R	H	N	N	N	N	H	H	H (f)
Migrations	R	H	N	N	N	N	H	H	H (f)
VCT									
Raffia	R	H	N	N	N	N	H	H	H (f)
ChromaSpin	R	H	N	N	N	N	H	H	H (f)
Excelon Stonetex	R	H	N	N	N	N	H	H	H (f)
Arteffects	R	R	N	N	N	N	H	H	H (f)
Standard Excelon MultiColor	R	H	N	N	N	N	H	R	H (f)
Standard Excelon Imperial Texture	R	H	N	N	N	N	H	H	H (f)
Standard Excelon Imperial Texture Rave	R	H	N	N	N	N	H	H	H (f)
Excelon Companion Square	R	H	N	N	N	N	H	H	H (f)
Excelon Feature Tile & Strips (d)	R	R	N	N	N	N	H	R	R (f)

NOTES:

- Numerical footnotes apply to the space requirements.
- Alpha footnotes apply to the product's suitability for the space. The numerical and alpha footnotes are consistent across all Recommended Applications Charts [e.g., (a) is the same footnote for linoleum as it is for vinyl, etc.]. Depending upon the category, product and space requirements, some footnotes may not appear.
- In addition to spaces listed on these charts:
 - Armstrong floors may be used on stair steps, risers and landings. A manufactured slip-retardant nosing should always be applied on steps.
 - Armstrong floors are **not recommended** for exterior use, for interior spaces where pointed spike golf or track shoes will be used, or in areas where the floor will be subjected to unusually concentrated static or dynamic loads.
 - Armstrong floors **should not be used** as wall covering or wall surfacing.

- (a) In most cases veterinary applications are similar
- (b) Only operating rooms not requiring conductive flooring
- (c) Only recommended for accents and borders
- (d) Armstrong floors are not recommended for commercial kitchens and commercial food processing areas, including behind fast-food counters
- (g) Most Armstrong floors are not recommended for heavy industrial areas.
- (i) No standing water walk-off mats required
- (l) Not recommended in laboratories that require special decontamination procedures on surfaces, including floors

- (1) Aseptic Area - Hygienic conditions are of critical importance
- (2) Water Resistance - Wet area installation is needed (flash coving, sealed seams)
- (3) Slip Retardance - A more secure walking surface is required
- (4) Surface Unevenness - The flooring surface should not interfere with chair or cart movements
- (5) Static control flooring is normally required in this area
- (6) Not recommended in areas that require electrostatic discharge control

H = Highly Recommended

The best flooring choice(s) for the space.

R = Recommended

Flooring choice(s) that are suitable for the space.

N = Not Recommended

Flooring that should not be used for the space.

- The ratings of H, R or N are based on an evaluation of the performance, cost and aesthetic requirements of the space.

	Guest Bathroom (l)	Guest Room	Lobby	Lounge	Stairway/Landing	Vending Area (l)
	R	R	R	R	R	R
	R	R	R	R	R	R
	R	R	R	R	R	R
	R	R	R	R	R	R
	R	R	R	R	R	R
	R	R	R	R	R	R
	R	R	R	R	R	R
	R	R	R	R	R	R
	R	R	R	R	N	R

	Frozen Food	Indoor Mall Common Area	Laundromat	Meat/Seafood Counter (behind)	Pet Shop	Photo Processing	Produce Area	Sales Floor - Department Store	Sales Floor - Grocery	Sales Floor - Mass Merchant
	H	N	R	N	H	H	R	H	H	H
	H	N	R	N	H	H	R	H	H	H
	H	N	R	N	H	H	R	H	H	H
	H	N	R	N	H	H	R	H	H	H
	H	N	R	N	H	H	R	R	R	R
	H	N	R	N	H	H	R	H	H	H
	H	N	R	N	H	H	R	H	H	H
	H	N	R	N	H	H	R	H	H	H
	R	N	R	N	R	H	R	R	R	R

RECOMMENDED APPLICATIONS

ASSISTED LIVING/MILITARY HOUSING/LIGHT COMMERCIAL

Products	Activity Room/ Common Area	Beauty Salon/ Barber Shop	Corridor	Daycare Area	Dining Area (e)	Doctor/Dentist Office	Residence Bathroom (i)	Residence Kitchen (e)	Residence Room/ Barrack
BBT®									
STRIATIONS BBT®	H	H	H	H	R	R	R	R (e)	R
MIGRATIONS®	H	H	H	H	R	R	R	R (e)	R
VCT									
RAFFIA™	H	H	H	H	R	R	R	R (e)	R
ChromaSpin™	H	H	H	H	R	R	R	R (e)	R
EXCELON® Stonetex®	H	H	H	H	R	R	R	R (e)	R
ARTEFFECTS®	R	R	H	R	R	R	R	R (e)	R
Standard EXCELON® MultiColor™	H	H	H	H	R	R	R	R (e)	R
Standard EXCELON® Imperial® Texture	H	H	H	H	R	R	R	R (e)	R
Standard EXCELON® Imperial® Texture Rave®	H	H	H	H	R	R	R	R (e)	R
EXCELON® Companion Square®	H	H	H	H	R	R	R	R (e)	R
EXCELON® Feature™ Tile & Strips (d)	H	H	H	H	R	R	R	R (e)	R

OFFICE

Products	Cafeteria/Dining Area (e)	Commercial Parking Garage/Walkway	Computer Repair Area	Computer Training Room	Corridor	Data Warehousing	Elevator	Entryway/Foyer**	Lavatory
BBT®									
STRIATIONS™	R	N	N	H	H	N	R	N	R
MIGRATIONS®	R	N	N	H	H	N	R	N	R
VCT									
Raffia	R	N	N	H	H	N	R	N	R
ChromaSpin	R	N	N	H	H	N	R	N	R
Excelon Stonetex	R	N	N	H	H	N	R	N	R
Arteffects	R	N	N	H	H	N	N	N	R
Standard Excelon MultiColor	R	N	N	H	H	N	R	N	R
Standard Excelon Imperial Texture	R	N	N	H	H	N	R	N	R
Standard Excelon Imperial Texture Rave	R	N	N	H	H	N	R	N	R
Excelon Companion Square	R	N	N	H	H	N	R	N	R
Excelon Feature Tile & Strips (d)	R	N	N	H	H	N	R	N	R

**Recommendation is based upon the use of walk-off mats in entryways and over key pivot points

NOTES:

- Numerical footnotes apply to the space requirements.
 - Alpha footnotes apply to the product's suitability for the space. The numerical and alpha footnotes are consistent across all Recommended Applications Charts [e.g., (a) is the same footnote for linoleum as it is for vinyl, etc.]. Depending upon the category, product and space requirements, some footnotes may not appear.
- In addition to spaces listed on these charts:
- Armstrong floors may be used on stair steps, risers and landings. A manufactured slip-retardant nosing should always be applied on steps.
 - Armstrong floors are **not recommended** for exterior use, for interior spaces where pointed spike golf or track shoes will be used, or in areas where the floor will be subjected to unusually concentrated static or dynamic loads.
 - Armstrong floors **should not be used** as wall covering or wall surfacing.

- (a) In most cases veterinary applications are similar
- (b) Only operating rooms not requiring conductive flooring
- (c) Only recommended for accents and borders
- (d) Armstrong floors are not recommended for commercial kitchens and commercial food processing areas, including behind fast-food counters
- (g) Most Armstrong floors are not recommended for heavy industrial areas.
- (i) No standing water walk-off mats required
- (l) Not recommended in laboratories that require special decontamination procedures on surfaces, including floors

- (1) Aseptic Area - Hygienic conditions are of critical importance
- (2) Water Resistance - Wet area installation is needed (flash coving, sealed seams)
- (3) Slip Retardance - A more secure walking surface is required
- (4) Surface Unevenness - The flooring surface should not interfere with chair or cart movements
- (5) Static control flooring is normally required in this area
- (6) Not recommended in areas that require electrostatic discharge control

H = Highly Recommended

The best flooring choice(s) for the space.

R = Recommended

Flooring choice(s) that are suitable for the space.

N = Not Recommended

Flooring that should not be used for the space.

• The ratings of H, R or N are based on an evaluation of the performance, cost and aesthetic requirements of the space.

PUBLIC VENUES

Products	Airport/Railway/ Bus Terminal	Civic/Convention Center	Museum/Cultural Center
BBT®			
STRIATIONS BBT®	N	N	H
MIGRATIONS®	N	N	H
VCT			
RAFFIA™	N	N	H
ChromaSpin™	N	N	H
EXCELON® Stonetex®	N	N	H
ARTEFFECTS®	N	N	R
Standard EXCELON® MultiColor™	N	N	H
Standard EXCELON® Imperial® Texture	N	N	H
Standard EXCELON® Imperial® Texture Rave®	N	N	H
EXCELON® Companion Square®	N	N	H
EXCELON® Feature™ Tile & Strips (d)	N	N	H

	Lobby	Lunchroom (e)	Office/Administration/ Conference Room	Stairway/Landing	Telecommunications Center	Utility/Storage Rooms
	R	H	R	R	N	H
	R	H	R	R	N	H
	R	H	R	R	N	H
	R	H	R	R	N	H
	R	H	R	R	N	H
	R	H	R	R	N	H
	R	H	R	R	N	H
	R	H	R	R	N	H
	R	H	R	R	N	H
	R	H	R	R	N	H

RECOMMENDED APPLICATIONS

LIGHT INDUSTRIAL (g)

Products	Clean Room	Computer Lab Repair Area	Computer Training Room	Data Warehousing	Electronic Testing Lab	Electronics Manufacturing	Environmental Conditioning Unit (m)	Office/Conference Room	Photo Processing
BBT®									
STRIATIONS BBT®	N	N (6)	H	N	N (6)	N (6)	N	R	H
MIGRATIONS®	N	N (6)	H	N	N (6)	N (6)	N	R	H
VCT									
RAFFIA™	N	N (6)	H	N	N (6)	N (6)	N	R	H
ChromaSpin™	N	N (6)	H	N	N (6)	N (6)	N	R	H
EXCELON® Stonetex®	N	N (6)	H	N	N (6)	N (6)	N	R	H
ARTEFFECTS®	N	N (6)	H	N	N (6)	N (6)	N	R	H
Standard EXCELON® MultiColor™	N	N (6)	H	N	N (6)	N (6)	N	R	H
Standard EXCELON® Imperial® Texture	N	N (6)	H	N	N (6)	N (6)	N	R	H
Standard EXCELON® Imperial® Texture Rave®	N	N (6)	H	N	N (6)	N (6)	N	R	H
EXCELON® Companion Square®	N	N (6)	H	N	N (6)	N (6)	N	R	H
EXCELON® Feature™ Tile & Strips (d)	N	N (6)	H	N	N (6)	N (6)	N	R	H

NOTES:

- Numerical footnotes apply to the space requirements.
- Alpha footnotes apply to the product's suitability for the space. The numerical and alpha footnotes are consistent across all Recommended Applications Charts [e.g., (a) is the same footnote for linoleum as it is for vinyl, etc.]. Depending upon the category, product and space requirements, some footnotes may not appear.
- In addition to spaces listed on these charts:
 - Armstrong floors may be used on stair steps, risers and landings. A manufactured slip-retardant nosing should always be applied on steps.
 - Armstrong floors are not recommended for exterior use, for interior spaces where pointed spike golf or track shoes will be used, or in areas where the floor will be subjected to unusually concentrated static or dynamic loads.
 - Armstrong floors should not be used as wall covering or wall surfacing.

- (a) In most cases veterinary applications are similar
- (b) Only operating rooms not requiring conductive flooring
- (d) Only recommended for accents and borders
- (e) Armstrong floors are not recommended for commercial kitchens and commercial food processing areas, including behind fast-food counters
- (g) Most Armstrong floors are not recommended for heavy industrial areas
- (i) No standing water walk-off mats required
- (l) Not recommended in laboratories that require special decontamination procedures on surfaces, including floors
- (m) Only homogeneous products are recommended in low temperature environmental conditioning units NOT below 34° F (1.0 C)
- (1) Aseptic Area – Hygienic conditions are of critical importance
- (2) Water Resistance – Wet area installation is needed (flash coving, sealed seams)
- (3) Slip Retardance – A more secure walking surface is required
- (4) Surface Unevenness – The flooring surface should not interfere with chair or cart movements
- (5) Static control flooring is normally required in this area
- (6) Not recommended in areas that require electrostatic discharge control

H = Highly Recommended

The best flooring choice(s) for the space.

R = Recommended

Flooring choice(s) that are suitable for the space.

N = Not Recommended

Flooring that should not be used for the space.

- The ratings of H, R or N are based on an evaluation of the performance, cost and aesthetic requirements of the space.

	Production Laboratory	Research Laboratory	Small Parts Assembly	Sterile Packaging	Telecommunications Center
	R (I)	R (I)	R	R	N
	R (I)	R (I)	R	R	N
	R (I)	R (I)	R	R	N
	R (I)	R (I)	R	R	N
	R (I)	R (I)	R	R	N
	R (I)	R (I)	R	R	N
	R (I)	R (I)	R	R	N
	R (I)	R (I)	R	R	N
	R (I)	R (I)	R	R	N
	R (I)	R (I)	R	R	N

COMPARATIVE DATA

Products	Size Options	Overall Thickness (nominal) (1)	Wear Layer (nominal) (1)	Static Load Limit Per ASTM F 970 PSI (kg/cm ²) (1)	Durability (3)	Maintainability (3)	Resilience (3)	International Specifications (4)	Fire Test Data (5) ASTM E 648 Flooring Radiant Panel Critical Radiant Flux – 0.45 watts/cm ² or more, Class I ASTM E 662 Smoke Chamber Specific Optical Smoke Density – 450 or less
BBT®									
STRIATIONS BBT® MIGRATIONS®	12 in. x 24 in. 12 in. x 12 in.	1/8 in. (3.2 mm)	1/8 in. (3.2 mm)	250 (17.6)	VG	G	G	ASTM F 2982	Meets
VCT									
RAFFIA™	12 in. x 24 in.	1/8 in. (3.2 mm)	1/8 in. (3.2 mm)	125 (8.8)	VG	G	G	ASTM F 1066, Class 2 through-pattern ISO 10595, Type II	Meets
ChromaSpin™	12 in. x 12 in.	1/8 in. (3.2 mm)	1/8 in. (3.2 mm)	125 (8.8)	VG	G	G	ASTM F 1066, Class 2 through-pattern ISO 10595, Type II	
EXCELON® Stonetex®	12 in. x 12 in. 18 in. x 18 in.	1/8 in. (3.2 mm)	1/8 in. (3.2 mm)	125 (8.8)	VG	G	G	ASTM F 1066, Class 2 through-pattern ISO 10595, Type II	
ARTEFFECTS®	12 in. x 12 in.	1/8 in. (3.2 mm)	1/8 in. (3.2 mm)	125 (8.8)	G	G	G	ASTM F 1066, Class 3 surface pattern ISO 10595, Type III	
Standard EXCELON® MultiColor™	12 in. x 12 in.	1/8 in. (3.2 mm)	1/8 in. (3.2 mm)	125 (8.8)	VG	G	G	ASTM F 1066, Class 2 through-pattern ISO 10595, Type II	
Standard EXCELON Imperial® Texture	12 in. x 12 in.	1/8 in. (3.2 mm) 3/32 in. (2.4 mm)	1/8 in. (3.2 mm) 3/32 in. (2.4 mm)	125 (8.8)	VG G (3/32)	G	G	ASTM F 1066, Class 2 through-pattern ISO 10595, Type II	
Standard EXCELON Imperial Texture Rave®	12 in. x 12 in.	1/8 in. (3.2 mm)	1/8 in. (3.2 mm)	125 (8.8)	VG	G	G	ASTM F 1066, Class 2 through-pattern ISO 10595, Type II	
EXCELON Companion Square®	12 in. x 12 in.	1/8 in. (3.2 mm)	1/8 in. (3.2 mm)	125 (8.8)	VG	G	G	ASTM F 1066, Class 2 through-pattern ISO 10595, Type II	
Feature™ Tile & Strips (6)	12 in. x 12 in. 2 in. x 24 in. 4 in. x 24 in. 6 in. x 24 in.	1/8 in. (3.2 mm)	1/8 in. (3.2 mm)	125 (8.8)	VG	F (6)	G	ASTM F 1066, Class 1 – solid color ISO 10595, Type I	

- Overall and wear layer thicknesses are nominal and subject to normal manufacturing variances.
- Subjective ratings (Excellent, Very Good, Good, Fair) are in relation to other Armstrong™ commercial resilient floors. Ratings are not directly related to any one test. They are broadly based on tests and experience of Armstrong R & D under varying conditions and circumstances. These ratings should NOT be used for comparison to ratings used by other manufacturers to rank their own products.
- Reference Specifications: Armstrong products are manufactured to meet or exceed specification requirements.
 - Numerical flammability ratings alone may not define product performance under actual fire conditions. These ratings are provided only for use in the selection of products to meet specified limits.
- Feature Tile & Strips are recommended only for decorative borders and accents.

BBT Sustainability Facts

Materials	Certified Low Emitting LEED® EQ4.3 Indoor Air Quality	✓
	Green Guide for Healthcare GGHC IEQ4.3	✓
	PVC-Free BioBased	✓
	Recycled Content	
	LEED MR4.0 Pre-consumer	3%
	LEED MR4.0 Post-consumer	up to 10%
	Recyclable LEED MR2	N/A
	Regional Materials LEED MR5.0*	Jackson, MS
Rapidly Renewable Materials LEED MR6.0	2%	
Certifications & Programs	Adhesives	
	Certified Low Emitting LEED EQ4.1	✓
	SCAQMD Rule 1168 Compliant	✓
	NSF-332 Certified	✓
	FloorScore™ Certified to CDPH Standard Method V1.1-2010	✓
	Collaborative for High Performance Schools CHPS-IEQ2.2 & LABS-21 IEQ4.3	✓
	U.S. Green Building Council Member	✓
	Canada Green Building Council Member	✓
	Armstrong Recycling Program	N/A

VCT Sustainability Facts

Materials	Certified Low Emitting LEED® EQ4.3 Indoor Air Quality	✓
	Green Guide for Healthcare GGHC IEQ4.3	N/A
	PVC-Free BioBased	N/A
	Recycled Content	
	LEED MR4.0 Pre-consumer	1%
	LEED MR4.0 Post-consumer	N/A
	Recyclable LEED MR2	✓
	Regional Materials LEED MR5.0*	Kankakee, IL** Southgate, CA† Jackson, MS‡
Rapidly Renewable Materials LEED MR6.0	N/A	
Certifications & Programs	Adhesives	
	Certified Low Emitting LEED EQ4.1	✓
	SCAQMD Rule 1168 Compliant	✓
	NSF-332 Certified	✓
	FloorScore™ Certified to CDPH Standard Method V1.1-2010	✓
	Collaborative for High Performance Schools CHPS-IEQ2.2 & LABS-21 IEQ4.3	✓
	U.S. Green Building Council Member	✓
	Canada Green Building Council Member	✓
	Armstrong Recycling Program	✓

*Depends on project location
 **Excelon Stonetex, Raffia, ChromaSpin, Arteffects, Standard Excelon® Imperial® Texture Rave®, Standard Excelon Imperial Texture Classics, Standard Excelon MultiColor, Excelon Feature Tile & Strips, Standard Excelon Imperial Texture
 †Excelon Companion Square, Standard Excelon MultiColor, Standard Excelon Imperial Texture
 ‡Standard Excelon Excelon MultiColor, Standard Excelon Imperial Texture

ADHESIVES AND INSTALLATION

Products	Adhesive Options (depends on substrate)					Moisture Limits		pH Readings
	Wood	Concrete	Ceramic, Terrazo, Marble	Metal	Existing Resilient Floor	MVER Calcium Chloride Test (lbs./1000 sq. ft./24 hrs.)	Relative Humidity In-Situ Probe	
BBT®								
STRIATIONS BBT® MIGRATIONS®	S-525 or S-700	S-525 or S-700	S-525 or S-700	S-700	S-525 Tile-On System	7 5 when using S-700	85 80 when using S-700	5-11 5-9 for S-700
VCT								
RAFFIA™ ChromaSpin™ ARTEFFECTS® Standard EXCELON®, Imperial® Texture, Rave®, MultiColor™ EXCELON Stonetex®, Companion Square®, Feature™ Tile and Strips	S-515, S-525, S-700, S-750 or Flip® Spray Adhesive	S-515, S-525, S-700, S-750 or Flip® Spray Adhesive	S-515, S-525, S-700, S-750 or Flip® Spray Adhesive	S-700 or Flip® Spray Adhesive	S-515, S-525, S-750 Tile-On System or Flip® Spray Adhesive	7 5 when using S-700 or S-750	90 when using S-515 85 when using S-525 80 when using S-700 or S-750 93 when using Flip® Spray Adhesive	5-11 5-9 for S-700 or S-750

Introducing the new S-525 BioBased Tile™ Adhesive

- Features a premium, strong bond
- Water-resistant when fully cured
- Low-VOC emissions comply with LEED® Credit EQ4.1 – no residual odor
- Contains no volatile solvents, no hazardous materials and is nonflammable
- Great for over concrete slabs up to 85% internal relative humidity



MAINTENANCE

Products	Cleaners	Sealers	Polishes	Maintenance Options			
				Polish	Low Maintenance Options		
					No Polish Spray Buff	No Polish Dry Buff	No Polish No Buff
BBT®							
Striations Migrations	S-485	S-495	S-480	✓	Not recommended	Not recommended	Not recommended
VCT							
Raffia ChromaSpin Arteffects Standard Excelon, Imperial Texture, Rave, MultiColor Excelon Stonetex, Companion Square, Feature Tile and Strips	S-485	S-495	S-480	✓	Not recommended	Not recommended	Not recommended

STRIATIONS BBT® | MIGRATIONS®

BioBased Tile®

Materials, Construction and Colors
A biobased polyester composition floor tile. Protected by an acrylic factory finish, the colors and pattern detail are dispersed uniformly throughout the thickness of the product. Color pigments are insoluble in water and resistant to cleaning agents and light.

Size
Migrations 12 in. x 12 in. (305 mm x 305 mm) tile
Striations 12 in. x 24 in. (305 mm x 610 mm) tile

Gauge (nominal thickness)
1/8 in. (3.2 mm)

Limitations
Striations and Migrations should not be used in the following areas:

- Hospital operating rooms.
- Heavy industrial and exterior areas.
- Commercial kitchens and commercial food processing areas.
- Where pointed spikes such as golf or track shoes will be used.

Suitable for Application Over

- Concrete, terrazzo, and other dry, structurally sound monolithic subfloors, which are suspended, on grade, or below grade.
- Suspended wood subfloor construction with approved wood underlayments, and a minimum of 18 in. (45.72 cm) well-ventilated air space below.
- Most metal floors and most existing single-layer resilient floors on approved underlayments.
- Radiant-heated subfloors with a maximum surface temperature of 85° F (29° C).

Unsuitable for Application Over

- Subfloors where excessive moisture or alkali is present.
- Sleeper-constructed wood subfloors, on grade or below grade.
- Lightweight aggregate concrete subfloors having a density of less than 90 lbs. per cu. ft. (1442 kg/m³) or cellular concrete having a plastic (wet) density less than 100 lbs. per cu. ft. (1602 kg/m³) [94 lbs. per cu. ft. (1506 kg/m³) dry weight], or concrete having a compressive strength of less than 3500 psi (24 MPa). Concrete slabs with heavy static and/or dynamic loads should have higher design strengths and densities calculated to accommodate such loads.

Concrete curing agents, sealers, hardeners, or parting agents should be removed.

TECHNICAL DATA
Shipping Weight
12 in. x 12 in. – 63 lbs./carton (29 kg)
12 in. x 24 in. – 61 lbs./carton (28 kg)

Packaging
12 in. x 12 in. – Tiles per carton – 45 (45 sq. ft.)
12 in. x 24 in. – Tiles per carton – 22 (44 sq. ft.)

Gloss (typical value)
Migrations: 60 degrees specular: 9-18
Striations: 60 degrees specular: 5-15

International Specifications
ASTM F 2982

Static Load Limit
ASTM F 970
250 lbs./sq. in. (17.6 kg/cm²)

NOTE: Floors should be protected from sharp-point loads and heavy static loads. High-heeled traffic (1000 psi (70.3 kg/cm²) or more) may visibly damage wood, resilient and other floor coverings. For questions regarding product suitability and detailed instructions for floor preparation and installation in these applications, please contact Armstrong.

Comparative Subjective Property Ratings
Durability – Very Good
Maintainability – Good
Resilience – Good

Subjective ratings (excellent, very good, good, fair) are in relation to other Armstrong commercial resilient floors. Ratings are not directly related to any one test. They are broadly based on tests and experience of Armstrong Research and Development under varying conditions and circumstances. These ratings should not be used for comparison to ratings used by other manufacturers to rank their own products.

Fire Test Data
ASTM E 648 Flooring Radiant Panel Critical Radiant Flux – 0.45 watts/cm² or more – Class I
ASTM E 662 Smoke Chamber Specific Optical Smoke Density – 450 or less
CAN/ULC – S102.2-07 Migrations only
Flame Spread Rating – 0
Smoke Developed Classification – 25

Numerical flammability ratings alone may not define the performance of the product under actual fire conditions. These ratings are provided only for use in the selection of products to meet the specified limits.

INSTALLATION
Job Conditions
Subfloors/underlayments shall be dry, clean, and smooth. They shall be free from paint, varnish, solvents, wax, oil, existing adhesive residue, or other foreign matter.

For more detailed requirements of concrete, wood and metal subfloors, as well as wood and trowelable underlayments, refer to the [Armstrong Guaranteed Installation Systems](#) manual, F-5061 or to the installation instructions at [armstrong.com](#).

Moisture testing must be performed on all concrete slabs regardless of their age or grade level including areas where resilient flooring has already been installed. Moisture Vapor Emission Rate (MVER) using Calcium Chloride (ASTM F 1869) and/or percent relative humidity (ASTM F 2170) tests must be conducted. Following are Armstrong's maximum allowable moisture limits:

When using S-525 Adhesive, moisture test results shall not exceed a MVER of 7.0 lbs./1000 sq. ft./24 hours per ASTM F 1869 and/or 85% RH per ASTM F 2170.

When using S-700 Adhesive, moisture test results shall not exceed a MVER of 5.0 lbs./1000 sq. ft./24 hours per ASTM F 1869 and/or 80% RH per ASTM F 2170.

On installations where both the Moisture Vapor Emission Rate and percent internal relative humidity tests are conducted, results for both tests shall comply with the allowable limits listed above.

Before installation, concrete floors should also be tested for pH following procedures in ASTM F 710. When testing for pH, the allowable readings for the installation of Armstrong flooring are 5-11 when using S-525 and 5-9 when using S-700.

Bond Tests should also be conducted for compatibility with the substrate.

Temperature shall be maintained at a minimum of 65° F (18° C) and a maximum of 100° F (38° C) for 48 hours prior to installation, during installation and 48 hours after completion. A minimum temperature of 55° F (13° C) shall be maintained thereafter. Condition all flooring materials and adhesives to room temperature at least 48 hours prior to starting installation. Protect all materials from the direct flow of heat from hot-air registers, radiators, or other heating fixtures and appliances.

Procedure

Striations and Migrations should be installed with the following adhesives:

Subfloor	Wood Underlayment	Concrete	Ceramic, Marble, Terrazzo	Metal	Existing Resilient Floor
Adhesive	S-525 S-700	S-525 S-700	S-525 S-700	S-700	S-525 Tile-On System

Detailed instructions may be found at [armstrong.com](#).

MAINTENANCE

Striations and Migrations are designed to be maintained by traditional resilient flooring maintenance methods, which include the use of polishes, spray-buffing techniques and appropriate high-speed maintenance systems.

Initial Maintenance Immediately After Installation

- Sweep or vacuum thoroughly.
- Damp mop with a properly diluted neutral detergent solution such as Armstrong S-485 Floor Cleaner – carefully wiping up black marks and excessive soil.
- Apply two coats of high quality commercial floor polish such as Armstrong S-480.
- Do not wash, scrub or strip the floor for at least four days after installation.

Preparation for Commercial Use

For specific, ongoing maintenance procedures see F-8663.

WARRANTIES

Armstrong warrants its regular (first quality) commercial floors and wall base to be free from manufacturing defects and warrants the installation integrity for five years from the date of purchase, if installed according to the installation and maintenance instructions at [armstrong.com](#). This warranty extends only to the original end-user. See [Armstrong Commercial Floor Warranty](#), F-3349 or visit [armstrong.com](#) for warranty details, limitations and exclusions.

WARNING: EXISTING IN-PLACE RESILIENT FLOOR COVERING AND ASPHALTIC ADHESIVES. DO NOT SAND, DRY SWEEP, DRY SCRAPE, DRILL, SAW, BEADBLAST, OR MECHANICALLY CHIP OR PULVERIZE EXISTING RESILIENT FLOORING, BACKING, LINING FELT, ASPHALTIC "CUTBACK" ADHESIVE, OR OTHER ADHESIVE.



LEED eligible under
Credit EQ4.3 for
Indoor Air Quality.



ISO 9001



Quality
Management
Standard



RAFFIA™ | ChromaSpin™ | Stonetex® ARTEFFECTS® | Companion Square Feature™ Tile & Strips Imperial® Texture Classics | MultiColor™ | Rave®

VCT

Material

Composed of 85% limestone in a polyvinyl chloride binder with pigments.

Construction and Colors

Color and pattern detail are dispersed uniformly throughout the thickness of the material. Color pigments are insoluble in water and resistant to cleaning agents and light.

ChromaSpin – Color detail is dispersed uniformly throughout the thickness of the material. Color pigments are insoluble in water and resistant to cleaning agents and light.

Arteffects – Color and pattern detail are dispersed uniformly throughout the wear layer. Color pigments are insoluble in water and resistant to cleaning agents and light.

Size

Raffia – 12 in. x 24 in. (305 mm x 610 mm)

ChromaSpin, Arteffects, Companion Square, Feature Tile, Rave, MultiColor, Imperial Texture – 12 in. x 12 in. (305 mm x 305 mm)

Stonetex – 18 in. x 18 in. (457 mm x 457 mm), 12 in. x 12 in. (305 mm x 305 mm)

Feature Strips – 2 in. x 24 in. (50.8 mm x 610 mm), 4 in. x 24 in. (101.6 mm x 610 mm), 6 in. x 24 in. (152.4 mm x 610 mm)

Gauge (nominal thickness)

1/8 in. (3.2 mm)

3/32 in. (2.4 mm) – Imperial Texture only

Limitations

VCT should not be used in the following areas:

- Hospital operating rooms.
- Heavy industrial and exterior areas.
- Commercial kitchens and commercial food processing areas.
- Where pointed spikes such as golf or track shoes will be used.

Suitable for Application Over

- Concrete, terrazzo, and other dry, structurally sound monolithic subfloors, which are suspended, on grade, or below grade.
- Suspended wood subfloor construction with approved wood underlayments, and a minimum of 18 in. (45.72 cm) well-ventilated air space below.
- Most metal floors and most existing single-layer resilient floors on approved underlayments.
- Radiant-heated subfloors with a maximum surface temperature of 85° F (29° C).

Unsuitable for Application Over

- Subfloors where excessive moisture or alkali is present.
- Sleeper-constructed wood subfloors, on grade or below grade.
- Lightweight aggregate concrete subfloors having a density of less than 90 lbs. per cu. ft. (1442 kg/m³) or cellular concrete having a plastic (wet) density less than 100 lbs. per cu. ft. (1602 kg/m³) [94 lbs. per cu. ft. (1506 kg/m³) dry weight], or concrete having a compressive strength of less than 3500 psi (24 MPa). Concrete slabs with heavy static and/or dynamic loads should have higher design strengths and densities calculated to accommodate such loads.

Concrete curing agents, sealers, hardeners, or parting agents should be removed.

TECHNICAL DATA

Shipping Weight

12 in. x 12 in. – 63 lbs./carton (28.5 kg)
18 in. x 18 in. – 64 lbs./carton (29 kg)
12 in. x 24 in. – 61 lbs./carton (27.7 kg)
2 in. x 24 in. – 11 lbs./carton (4.99 kg)
4 in. x 24 in. – 88 lbs./carton (39.9 kg)
6 in. x 24 in. – 68 lbs./carton (30.8 kg)

Packaging

12 in. x 12 in. – 45 tiles/carton (45 sq. ft.)
18 in. x 18 in. – 20 tiles/carton (30 sq. ft.)
12 in. x 24 in. – 22 tiles/carton (44 sq. ft.)
2 in. x 24 in. – 24 strips/carton (8 sq. ft.)
4 in. x 24 in. – 100 strips/carton (66.7 sq. ft.)
6 in. x 24 in. – 50 strips/carton (50 sq. ft.)

Gloss (typical value)

Raffia, ChromaSpin – 60 degrees specular: 9-18

Stonetex – 60 degrees specular: 15-30

Arteffects, Companion Square, Feature Tile, Feature Strips, Rave, MultiColor, Imperial Texture – 60 degrees specular: 20-40

Reference Specifications – International Standards

Stonetex, MultiColor, Imperial Texture, Rave, Companion Square – ASTM F 1066, Class 2 through pattern, ISO 10595, Type II

Arteffects – ASTM F 1066, Class 3 surface pattern, ISO 10595, Type III

Feature Tile & Strips – ASTM F 1066, Class 1 solid color, ISO 10595, Type I

Static Load Limit

ASTM F 970
125 lbs./sq. in. (8.79 kg/cm²)

NOTE: Floors should be protected from sharp-point loads and heavy static loads. High-heeled traffic [1000 psi (70.3 kg/cm²) or more] may visibly damage wood, resilient and other floor coverings. For questions regarding product suitability and detailed instructions for floor preparation and installation in these applications, please contact Armstrong.

Comparative Subjective Property Ratings

Durability – Good (Arteffects, 3/32 in. Imperial Texture); Very Good (All other products)
Maintainability – Fair (Feature Tile); Good (All other Products)
Resilience – Good

Subjective ratings (excellent, very good, good, fair) are in relation to other Armstrong commercial resilient floors. Ratings are not directly related to any one test. They are broadly based on tests and experience of Armstrong Research and Development under varying conditions and circumstances. These ratings should not be used for comparison to ratings used by other manufacturers to rank their own products.

Fire Test Data

ASTM E 648 Flooring Radiant Panel Critical Radiant Flux – 0.45 watts/cm² or more – Class I
ASTM E 662 Smoke Chamber Specific Optical Smoke Density – 450 or less

INSTALLATION

Job Conditions

Subfloors/underlayments shall be dry, clean and smooth. They shall be free from paint, varnish, solvents, wax, oil, existing adhesive residue, or other foreign matter.

For more detailed requirements of concrete, wood and metal subfloors, as well as wood and trowelable underlayments, refer to the [Armstrong Guaranteed Installation Systems](#) manual, F-5061 or to the installation instructions at [armstrong.com](#).

Moisture testing must be performed on all concrete slabs regardless of their age or grade level including areas where resilient flooring has already been installed. Moisture Vapor Emission Rate (MVER) using Calcium Chloride (ASTM F1869) and/or percent relative humidity (ASTM F 2170) tests must be conducted. Following are Armstrong's maximum allowable moisture limits:

- When using S-515 Adhesive, moisture test results shall not exceed a MVER of 7.0 lbs./1000 sq. ft./24 hours per ASTM F 1869 and/or 90% RH per ASTM F 2170.
- When using S-525 Adhesive, moisture test results shall not exceed a MVER of 7.0 lbs./1000 sq. ft./24 hours per ASTM F 1869 and/or 85% RH per ASTM F 2170.
- When using S-700 or S-750 Adhesives, moisture test results shall not exceed a MVER of 5.0 lbs./1000 sq. ft./24 hours per ASTM F 1869 and/or 80% RH per ASTM F 2170.
- When using Flip® Spray Adhesive, moisture test results shall not exceed 93% rH per ASTM F 2170.

On installations where both the Moisture Vapor Emission Rate and percent internal relative humidity tests are conducted, results for both tests shall comply with the allowable limits listed above.

Before installation, concrete floors should also be tested for pH following procedures in ASTM F 710. When testing for pH, the allowable readings for the installation of Armstrong flooring are 5-11 when using S-515, S-525 or Flip® Spray Adhesive and 5-9 when using S-700 or S-750.

Bond Tests should also be conducted for compatibility with the substrate.

Temperature shall be maintained at a minimum of 65° F (18° C) and a maximum of 100° F (38° C) for 48 hours prior to installation, during installation and 48 hours after completion. A minimum temperature of 55° F (13° C) shall be maintained thereafter.

Condition all flooring materials and adhesives to room temperature at least 48 hours prior to starting installation. Protect all materials from the direct flow of heat from hot-air registers, radiators, or other heating fixtures and appliances.

Procedure

Subfloor	Wood Underlayment	Concrete	Ceramic, Marble, Terrazzo	Metal	Existing Resilient Floor
Adhesive	S-515 S-525 S-700 S-750	S-515 S-525 S-700 S-750	S-515 S-525 S-700 S-750	S-700	S-515 S-525 S-750 Tile-On System

Detailed instructions may be found at [armstrong.com](#).

MAINTENANCE

VCT is designed to be maintained by traditional resilient flooring maintenance methods, which include the use of polishes, spray-buffing techniques and appropriate high-speed maintenance systems.

Initial Maintenance Immediately After Installation

- Sweep or vacuum thoroughly.
- Damp mop with a properly diluted neutral detergent solution such as Armstrong S-485 Floor Cleaner – carefully wiping up black marks and excessive soil.
- Apply two coats of high quality commercial floor polish such as Armstrong S-480.
- Do not wash, scrub or strip the floor for at least four days after installation.

Preparation for Commercial Use

For specific, ongoing maintenance procedures see F-8663.

WARRANTIES

Armstrong warrants its regular (first quality) commercial resilient floors and wall base to be free from manufacturing defects for five years from the date of purchase. Armstrong also warrants the installation integrity of its commercial floor for five years from the date of purchase, if installed according to the installation and maintenance instructions at [armstrong.com](#). This warranty extends only to the original end user. See [Armstrong Commercial Floor Warranty](#), F-3349 or visit [armstrong.com](#) for warranty details, limitations and exclusions.

WARNING: EXISTING IN-PLACE RESILIENT FLOOR COVERING AND ASPHALTIC ADHESIVES. DO NOT SAND, DRY SWEEP, DRY SCRAPE, DRILL, SAW, BEADBLAST, OR MECHANICALLY CHIP OR PULVERIZE EXISTING RESILIENT FLOORING, BACKING, LINING FELT, ASPHALTIC "CUTBACK" ADHESIVE, OR OTHER ADHESIVE.



LEED eligible under Credit EQ4.3 for Indoor Air Quality.



ISO 9001



Quality Management Standard





FP7440F8684-615

Printed in United States of America.

© 2013 AWI Licensing Company

The Armstrong logo, EXCELON® and LEED® are registered in the United States and Canada.

ARTEFFECTS®, BBT®, BioBased Tile®, BioStride®, Companion Square®, Imperial®, Stonetex® and Rave® are registered in the United States only.

All trademarks owned by AWI Licensing Company.

FloorScore® is a registered trademark of the Resilient Floor Covering Institute.

UL, the UL certification marks and the UL logo are trademarks of the UL LLC ©2012.

LEED® is a registered trademark of the United States Green Building Council.

Colors pictured in this brochure are as accurate as possible but may not be identical to the actual product due to the printing process. For true color representation, order product samples before specifying.

The knowledge and technical support you need to bring your vision to life.

Website

Online Chat: armstrong.com/commercialflooring
Technical: floorexpert.com

Phone

1 877 armstrong (276 7876)
Choose Option 2 then:
Option 1 - Order samples and literature
Option 3, 3 - Talk to your Techline flooring expert
Option 8 - Contact your local Armstrong representative