

## SPECIFICATIONS

---

STYLE NAME	<b>HIGHRISE MODULAR</b>
CONSTRUCTION	Tufted Loop Pile
PILE CONTENT	100% B.C.F. Synthetic Fiber
DYE METHOD	Solution Dyed
GAUGE	1/10
PILE HEIGHT	4.0mm (0.157 inch) ± 5%
TOTAL THICKNESS	7.0mm (0.275 inch) ± 5%
PILE WEIGHT	660 gm/sm (19.4 oz/sy) ± 5%
TOTAL WEIGHT	4000 gm/sm (117.9 oz/sy) ± 5%
BACKING MATERIAL	PVC + Glass Fiber Spunbonded + PVC
TILE SIZE	50cm x 50cm
TILES PER BOX	20 pcs

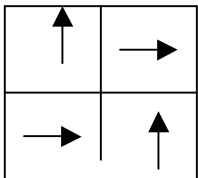
## PERFORMANCE

---

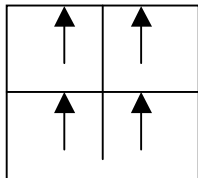
FLOOR RADIANT PANEL	ASTM E-648
DIMENSION STABILITY	AACHEN Test & CNS 13924 ≤ 0.2%
FLAMMABILITY	BS 4790-1987 : Hot Metal Nut, Method 1 Pass
LIGHT COLORFASTNESS	BS 1006 B02-1990, Grade 5 Pass
CROCKING COLORFASTNESS	BS EN ISO 105 X12-1995 Pass
ELECTROSTATIC PROPENSITY	CNS 13595 10 ≤ 2.0KV 20% R.H., 70F
SOIL RESISTANCE	3M Test Pass

All specifications are subject to normal manufacturing tolerances.

Recommended Installation Methods :



Quarter-turn



Monolithic